

The Roundup

PRSR STD
U.S.
POSTAGE
PAID
The Roundup

(406) 433-3306 or 1-800-749-3306
Fax (406) 433-4114
e-mail address:
info@roundupweb.com
www.roundupweb.com

Business Office:
Located at 111 West Main
Sidney, MT

Mailing Address:
P.O. Box 1207
Sidney, MT 59270

Wednesday, May 29, 2013

Volume 39 • Number 15

Snowbirds Fly Into Sidney

Major Wayne Mott (R), who acts as the Team Lead as well as the pilot for Snowbird 1, presents a gift of appreciation to Sidney's Bryan Prevost, who was instrumental in bringing the Snowbirds to Sidney for the second time.



The Canadian Snowbirds thrilled a huge audience with their precision aerial performance Wednesday evening at the Sidney-Richland airport. The previous day, the team based out of Moose Jaw, Saskatchewan was sanctioned by the FAA, allowing the Snowbirds to fly in the US, and treating anyone watching to a great show. The pilots also visited West Side School. Tuesday evening, a reception was held for the Snowbirds and the sponsors, during which the presentations were made. Wade VanEvery of the Sidney Chamber presents Snowbird 3, Captain Brett Parker, with a signed print. Captain Parker was in attendance the last time the Snowbirds flew in Sidney.

With the help of select students from Sidney and Lambert, Snowbird 3, Captain Brett Parker, goes over roll call Wednesday morning, May 22 during his visit to West Side School. For more photos go to www.roundupweb.com.



Used Backpacks Needed



Ethan and Meagan Dotson show one of the boxes they helped decorate for the backpack project.

By Dianne Swanson

Not everyone in the State of Montana is as fortunate as we are in this area. Not only is our economy good, but we have companies like Continental Resources that donate a new backpack to every child in Richland County who wants one.

There are schools in the western part of the state that are having to provide backpacks to many of their students who can't afford one, and some schools can't even do that.

As a way to share our good fortune with those students who have less, Diane Sorenson, her daughter Meagan Dotson with her two children Ethan and Abbey, are collecting new and gently used backpacks to send west with Diane's son, David. The backpacks will be completely vacuumed and cleaned, with names removed.

Sorenson was inspired when she noticed discarded backpacks that were still very usable. Dotson immediately got on board with the idea and her kids were excited to help. PATH donated boxes which are placed at Rau, Westside and Central Schools until June 7. There is also a box at the Village Square Mall which will stay until the end of June. Ethan and Abbey helped decorate the boxes and then asked if they could donate their gently used backpacks to help. If you have a new or good used backpack to donate, please drop it off at one of the listed locations.

Watford City Pick Up the Patch June 1

Pick up the Patch is a community-wide effort to clean up debris left behind once the winter snow melts in the Watford City and surrounding areas. It's a great opportunity for people and businesses to come together and show their community support and a great opportunity to meet your neighbors.

This year's 'Pick up the Patch' will begin on Saturday, June 1st and continue throughout the week to enable those people or businesses that are unable to help on a weekend but are willing to help, do so.

The Civic Center in Watford City will be the check in spot on Saturday morning. Here you will be able to obtain supplies such as: water, maps, gloves, garbage bags and a vest. It'll also be a great place to meet with your team and coordinate your efforts. Families with children are welcome to help out but will be assigned to the parks, walking paths, schools, fishing ponds, etc.

Lunch will be provided to all volunteers on Saturday from 12:30 – 2:00pm and dinner from 4:00pm – 6:00pm.

If you are interested in helping 'Pick up the Patch' please contact Laura Sanford at 701-570-5084 or Justin Smith at 701-570-0456.

Fairview Community Garage Sale to be Held June 15

The Fairview Community Garage Sale will be held Saturday, June 15. Anyone who wishes to be included on the list of sales is asked to call Joan Eldridge at 701-744-5346.

It promises to be a busy day in Fairview with the unveiling of the 2013 Old Timers Reunion button taking place that day as well.

"I Do" A Cultural History of Montana Weddings at MHC

You are invited to a "wedding reception" at the MonDak Heritage Center, June 22 at 2 p.m., with a presentation by Martha Kohl, historian from the Montana Historical Society, sponsored by Humanities Montana. Cost is \$25/members and \$30/non-members.

Reynolds Market Breaks Ground on New Shopping Center

Supermarket will be flagship tenant of The Shops at Fox Run, a 20-acre shopping center in Sidney, Montana

Reynolds Market of Sidney hosted the ground breaking ceremony at the location of their new 47,500 square foot, state of the art supermarket and shopping center on May 23, 2013. The shopping center, The Shops at Fox Run, will be located just beyond the US Post Office on the northwest corner of the intersection of Central Avenue (Hwy. 200) and Holly Street.

Other businesses committed to the location are ElectricLand Radio Shack, Sidney Liquor Agency #50 and, new to Sidney, ALCO.

"We are thrilled to get started with what will be a beautiful, modern and very comfortable retail shopping experience for the people of the Sidney area. This is not just Reynolds Market's commitment to the future of our community, but several other businesses which are and will be good, responsible merchants to our growing economy," said John Reynolds, President. "We have been here since 1925 and have been a good partner in the community, and to maintain that, we need to expand our store, offerings and improve our design to accommodate our guests. We are on time, on schedule and we intend on being open for the holidays this year."

Reynolds Market has partnered with Langlas and Associates as the contractor of the supermarket. Reynolds Market will be the anchor tenant in the shopping center, that when fully built out, will include approximately 120,000 square feet of retail and professional office space. Construction on Phase I of the project is expected to be completed in October of this year.

The new store will include fresh deli and bakery departments, fresh floral, expanded customer service area, expanded wine and a huge walk-in beer cave. The frozen foods section will also be double the size of the frozen section in the current store. Reynolds reputable custom meats will also be vastly expanded along with special cuts and services to better serve their customers. An expanded farm-fresh produce department will also bring a greater variety and increase consumer choices. The new store will feature a sit-down area inside the store for customers to enjoy, along with an outside seating area, complete with a monster grill, music and trimmings for any special occasion.

"We are very appreciative to all those who are working with us on this project," said Reynolds. "Without the help of the City of Sidney, Richland County Economic Development, local property owners (Vaux Family, Gordon Torgerson, Bob Koch, Steve Meagher), and many others, we would not be able to accomplish this dream."

The Reynolds organization has been serving the local communities since 1925 and values their local partners as



Pictured, L to R, are land seller Joe Russell, owner Richard Reynolds, retired manager Ron Barone, owners Marilyn Hoffman, Kevin, Rita and Greg McGovern, Marge Reynolds, John Reynolds and Kenny Schell, Associated Foods retail developers Steve Miner and Bill Walley.

they proceed with this project. Financing for the project is being provided through Stockman Bank and the civil engineering is being provided through Interstate Engineering, both with local affiliations.

For additional information retail sale or lease information contact John Reynolds, 406-433-1902 or Steve Miner, 801-978-8228, Associated Food Stores, Salt Lake City - Reynolds primary supplier since 1940

Inspect, Clean, Dry: FWP AIS Inspection Stations Open Across MT

Submitted by Montana Fish, Wildlife & Parks

Montana Fish, Wildlife & Parks officials said today that aquatic invasive species inspection stations and roving inspection crews are in operation at key border crossing sites, along major highways and on heavily used water bodies.

By law boaters must stop at AIS watercraft inspection stations for a brief interview and inspection. Already this month, two boats stopped at inspection stations were found to be fouled by zebra mussels, and another contaminated boat was found by an alert private citizen.

Boaters are urged to inspect, clean and dry boats, trailers and gear exposed to the water to ensure they don't carry organisms from one water body to another, whether they plan to travel an inspection route or not.

"At the inspection stations, boats and trailers will be carefully inspected and boaters can learn more about how to identify invasive species and prevent their spread from one water body to the next," said Allison Begley, FWP's AIS coordinator.

The most likely aquatic invasive species threats to Montana waters include quagga and zebra mussels, New Zealand mudsnails and Eurasian watermilfoil.

Inspection stations and roving crews will be operating throughout the boating season in these locations:

Clearwater Junction rest area; Eureka Hwy. 37 West bound; Ronan Hwy. 93 North bound rest area; Culbertson Hwy. 2 West bound rest area; Wibaux I-94 West bound; Dena Mora I-90 East bound rest area; Dillon I-15 North North and South bound; Shelby Hwy. 2 Westbound; Fort Peck Hwy. 24 Eastbound; Troy Hwy. 2 Eastbound; Clark Fork River drainage; Missouri River Drainage; Swan Area; Madison River drainage; Bitterroot River drainage; Roving crews will also work at fishing tournaments and

other boating events.

Montana's AIS laws were recently beefed up by the 2013 Legislature in a bill carried by Rep. Mike Cuffe (R-Eureka). One change established a means to create a statewide AIS management area. FWP will develop management area rules over the next few months, Begley said.

For more on aquatic invasive species, go to FWP's invasive species website at fwp.mt.gov and click on Aquatic Invasive Species on the Fishing page.

Free Fishing Days - June 1-2

Submitted by North Dakota Game & Fish Department

North Dakota Anglers are reminded they can fish for free June 1-2. That is the weekend North Dakota residents may fish without a license. All other fishing regulations apply. Refer to the 2012-2014 North Dakota Fishing Guide for season information.

Only Two Available... At This Price



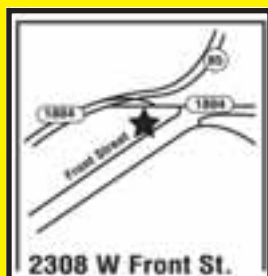
Ready For Immediate Delivery

Cash Price \$50,995

**16x80 • 3 bedroom • two bath
all sheetrock walls**

Delivered, Blocks, Anchors, Skirting & Steps

**Iseman
HOMES**
YOU'RE HOME, NOW.



2308 West Front St. Williston • 701-572-2590
Mon, Wed, Thur: 9 - 7 • Tue & Fri: 9 - 6 • Sat: 9 - 4



Plant Paradise
Linda Casey

*Many unique items
this year with
Lower Prices!*

Buy 2 Perennials, Get 1 Free!

• Planters
*Trees and Shrubs • Perennials
Annual Flowers and Vegetables*

Gift Certificates Available for any Occasion or Amount

Mon - Sat: 9am - 6pm • Sun: 1pm - 6pm
406-798-3378 • 34514 Hwy 200, Sidney, Towards Lambert

Fairview Kindergarten Graduation



Fairview Kindergarten celebrated their graduation on Wednesday with a delightful program and the awarding of diplomas. The graduating class of 2013: Back, L to R, Katie Bradley, Trey Lunstad, Jamie Goerke, Jenna Emig, Gabe Callender, Gavin Callender, Jessica Turnbow, Grady Andrews, Marc Morales-Pineda, Kambre Kloker and Wyatt McPherson. Front, L to R, Brayden Sundheim, Kynlee Turcotte, Deacon Gackle, Brady Selting, Taylor Dietrich, Hunter Emly, Tony Brass, Carly Buxbaum, Ryan Lustig and Joyce Waters.



Left to right, Brayden Sundheim, Gavin Callender, Trey Lunstad and Brady Selting present a poem about their year in kindergarten.

Right: Katie Bradley walks down the aisle. Below: Kambre Kloker, left, and Carly Buxbaum start off the "KINDERGARTEN" presentation.



Opening June 1st!

Here's The SCOOP!

Smoothies!
Milk Shakes!
Novelties!

Featuring Your Favorite
Blue Bunny Ice Cream!

OPEN DAILY FROM 11:30AM - 10PM
Nutt-N Better Ice Cream Shop
212 2nd St SE • Sidney, MT • (406) 433-4232

Hello Gorgeous
beauty • hair • spa

Now Open Mon-Sat: Evening by Appt.



Jennifer Denowh
489-1295



Racquel Schipman
489-0727

Specializing in haircuts, colors, perms & waxing
305 7th Ave SW, Sidney, MT • 406-433-3232

Reduction Sale On Pre-Owned Overstocked Pickups & SUVs



2011 F350 CC Lariat Diesel 4x4 50,724 mi white.....	\$49,495
2013 Expedition EL XLT 4,197 mi autumn red	\$44,995
2012 F150 CC Platinum 4x4 15,034 mi white.....	\$44,995
2012 F150 CC Platinum 4x4 16,001 mi black.....	\$42,995
2011 F150 CC Platinum 4x4 22,250 mi black.....	\$41,995
2012 Expedition EL 18,873 mi golden bronze	\$41,495
2011 GMC Yukon XL 4x4 44,215 mi white.....	\$38,995
2009 F150 CC Platinum 4x4 62,315 mi sterling gray	\$35,995
2013 Explorer XLT 16,009 mi sterling gray.....	\$34,995
2011 F150 CC Lariat 4x4 34,736 mi dark blue	\$33,995
2010 F150 CC XLT 4x4 9,500 mi silver.....	\$33,995
2010 GMC Sierra 1,500 CC 4x4 38,374 mi gray	\$33,995
2009 Chevy 2,500 CC LT 47,000 mi white	\$29,995
2011 F150 CC XLT 4x4 62,627 mi pale adobe.....	\$28,995
2011 F150 S/C XLT 4x4 44,755 mi sterling gray	\$27,495
2008 Chevy 2,500 CC 4x4 95,163 mi brown.....	\$26,995
2008 F150 CC Fx4 4x4 90,308 mi dark blue.....	\$23,995
2004 F250 CC XLT 4x4 diesel 121,075 mi maroon	\$16,995
2005 Dodge Ram 2,500 CC 4x4 99,810 mi black	\$15,995
2003 GMC Yukon XL 4x4 151,175 mi slate.....	\$11,995
2002 Chevy Suburban LS 4x4 176,185 mi green	\$9,495



Experience the Eagle Country Difference!

215 EAST MAIN
SIDNEY, MT
433-1810 OR
1-800-482-1810

PRESALE TICKETS AVAILABLE BEGINNING JUNE 4 • 8:30 A.M.

Package Deal \$59

• 1 Concert Ticket • 1 Admission Button • 1 Thursday Rodeo Ticket • 1 Friday Rodeo Ticket

**Sat., Aug. 3
7:30 p.m.**

Montgomery
IN CONCERT *Gentry*



With Special Guest
Gloriana

General \$40 • Reserved \$45
Fair Week: (if available)
General \$45 • Reserved \$50

PRCA RODEO • Brookman Rodeo LLC
Thurs., Aug. 1 & Fri., Aug. 2 • 7:30 p.m. each night

Tickets only available at the fair office.

Richland County
Fair & Rodeo
"Spirit & Pride County Wide"
July 31 - August 3, 2013
406-433-2801



For all your Farm/Ranch, Recreational, Residential, and Commercial needs.



Alan Seigfreid
Amanda Seigfreid

Jim & Janice Knudsen 120 2nd St. N.E. • Sidney Mt. 59270
Broker/Owners (O) 406-433-3010 • (C) 406-489-3010
email: alans@midrivers.com
Website: www.missouririverrealty.com



Shawna & Mike Paul, Jodi & Brad Chinn
Shannon Sivak, and Sheldon & Katrina Sivak
along with our children, would like to invite you to a

~ Surprise ~
70th Birthday Celebration
for our Mother/Grandmother
Beverly (Kjilbak-Sivak) Marthaller
1pm MST, Saturday, June 8th, 2013 at the
Grassy Butte Hall in Grassy Butte, ND



Assisted Living Facility



Studios and one bedroom apartments available for seniors!
Call or click at:
406-228-2208 • www.prairieridgevillage.com

We welcome news and sports stories!

Fax to: (406) 433-4114
email to: email@esidney.com
bring stories to 111 W. Main, Sidney
or call us at (406) 433-3306



STATISTICS

Lake Water Level Report
Sakakawea Fort Peck

Current Elevation.....	1828.3.....	2222.3
Last Week's Elev.....	1827.9.....	2222.4
One Year Ago.....	1835.4.....	2236.31
Release For Day (C.F.S.).....	20,500.....	8,300

Watford City Weather Data
Source: North Dakota Agricultural Weather Network

Date	High	Low	Precip.
May 20	57	48	1.10
May 21	55	45	0.45
May 22	55	44	0.05
May 23	70	47	0.00
May 24	71	52	0.00
May 25	N/A	N/A	N/A
May 26	N/A	N/A	N/A

Sidney Weather Data
Source: MSU Eastern Agricultural Research Center

Date	High	Low	Precip.
May 20	58	49	1.16
May 21	60	46	0.00
May 22	70	43	0.00
May 23	72	48	0.00
May 24	N/A	N/A	N/A
May 25	N/A	N/A	N/A
May 26	N/A	N/A	N/A
Average YTD Precipitation.....			4.99

Lower Yellowstone Rural Electric Association Inc., 75th Annual Meeting

Submitted by Jami Propp

The Lower Yellowstone Rural Electric Association Inc., 75th Annual Meeting will be held at the Richland County Fair Event Center in Sidney, Montana, with registration beginning at 5:30 P.M. on Wednesday, June 5, 2013.

Due to paving work that is in progress at the Event Center, parking will be different from previous years. There will be handicapped parking available by entering the West gate

of the Event Center. If you need to drop someone off close to the entrance of the Event Center, you may also enter through the West gate. The parking lot in front of the event center will have construction going on, but you will be able to park on the South half of that parking lot and there will be a walkway to the entrance of the Event Center. The South parking lot will have limited transportation to the front entrance for those unable to walk that far. If you are parking in the South parking lot the only way you will be able to access the parking lot is by 5th Street S.W. There will be staff assisting with parking on the West and South entrance into the fairgrounds. The parking lot on the NE side of the fairgrounds will also be available for parking. To park in the NE parking lot you will enter on 15 Avenue NW and walk across the bridge to enter the fairgrounds. There will be no staff or transportation available in the NE lot. Sorry for any inconvenience. We hope to see you at the Annual Meeting.

Time to Pick Up Your Farm Maps

The Richland County Farm Service Agency would like to remind producers to stop by the office to pick up their 2013 farm certification maps. Maps will not be mailed out for 2013. For more information, contact Tammy Lake at 406-433-2103 or stop by 2745 W. Holly Street, Sidney, MT.

Free Museum Workshops Coming Up in June

Submitted by Danielle Stuckle

The State Historical Society of North Dakota (SHSND) will be offering free workshops for county, local and tribal organizations this summer. "Good, Better, Best: Museum Standards and Best Practices" workshops will allow museum staff, board members and volunteers to better understand the best practices and standards being used by small museums.

Presenter, Danielle Stuckle, Outreach Coordinator with SHSND, will also discuss the STEPs program and how it can be used to evaluate policies and procedures and help museums better achieve their missions. Other featured topics will include collections care and management; care and maintenance of buildings; and general administration and management. Workshops will include a discussion of current museum projects in the region and a tour of the host museum.

The first workshop will be at the Cass County Historical Society in West Fargo, ND, on June 14, 2013, at 1 p.m. A second workshop will take place on June 28, 2013, at 1 p.m. at the Sargent County Historical Society and Museum in Forman, ND. For more information and to register, contact Outreach Coordinator Danielle Stuckle at 701-328-2794 or email dstuckle@nd.gov.

Youth Soccer Camp June 3-7

Sidney Youth Soccer is holding a soccer camp at the Richland County Fairgrounds, June 3-7, 2013.

British Soccer Camps provide players of all ages and abilities with the rare opportunity to receive high-level soccer coaching from a team of international experts. Each day includes individual foot skills, technical drills, tactical practices, small-sided games, coached scrimmages and a daily tournament. Equally important, the Challenger coaching staff provides your child with lessons in respect, responsibility, integrity, sportsmanship and leadership.

Mini Soccer (1.5 hour), Ages 4-6, 9 a.m.-10:30 a.m.; Mini Soccer (1.5 hour), Ages 4-6, 10:40 a.m.-12:10 p.m.; Half Day, Ages 6-19, 9 a.m.-12 p.m.; Half Day, Ages 6-19, 1 p.m.-4 p.m.; Full Day, Ages 9-19, 9 a.m.-12 p.m. & 1 p.m.-4 p.m.

Go to this article on our website, roundupweb.com or check out Sidney Youth Soccer on Facebook for a link to the registration form.

Ervin Johnson, 84, Sidney, MT

Funeral services for Ervin L. Johnson, age 84, of Sidney, MT, were held at 10 a.m., Tuesday, May 28, 2013 at Pella Lutheran Church, Sidney, MT. Burial was in the Sidney Cemetery under the direction of Fulkerson Funeral Home of Sidney, MT. Remembrances and condolences may be shared with the family at www.fulkersons.com. Ervin died early Thursday morning, May 23, at the Eastern Montana Veterans Home in Glendive, MT.

EVENTS

SEND US YOUR EVENTS!

THE ROUNDUP: PO Box 1207, 111 West Main, Sidney, MT 59270
406-433-3306 Fax: 406-433-4114
Email: classads@esidney.com

Richland County

Events in Sidney unless otherwise listed. MT Zone.

Thurs., May 30

- 12 p.m.— Savage Senior Center will host a meal.
- 12:45 - 1:45 p.m. — Sidney Senior Citizen Center will be having a potluck lunch and cards. For more info. call 406-433-8077.
- 5 p.m. — TOPS, Crestwood NW entrance, Weigh-ins 5-5:30 p.m., Meeting 5:30-6 p.m.
- 7 p.m. — Interfaith Community Outreach will host a Coffee Hour at the LDS Church, 1215 5th St SW.
- 8 p.m. — NA meeting, Millers' Corner banquet room.

Fri., May 31

- 11:30 a.m. — Sidney Senior Citizen Center will be hosting a meal. For more info call 406-433-8077.

Sat., Jun. 1

- 9 a.m. & 7p.m. — AA Group Trinity Lutheran Church Education bldg.
- 10 a.m. — Gamblers Anonymous at Millers' Corner.

Sun., Jun. 2

- 1 p.m. — Savage Senior Center will be hosting cards, coffee, and potluck at 1pm.
- 6:45 p.m.— Early Bird Bingo at the Moose Lodge regular bingo at 7 p.m.
- 7 p.m. — AA Group Trinity Lutheran Church Education bldg.

Mon., Jun. 3

- 11:30 a.m. — Sidney Senior Citizen Center will be hosting a meal. For more info call 406-433-8077.
- Noon — AA Group Trinity Lutheran Church Education bldg.
- 6:30p.m.— Sidney Moose Lodge Pinochle games.

Tues., Jun. 4

- 7 p.m. — AA Group Trinity Lutheran Church Education bldg.

Wed., Jun. 5

- 6 p.m. - 8p.m. — Interfaith Community Outreach will host a free meal and get acquainted at the Assembly of God Church, 414 E. Main St.
- 5:30 p.m. — Lower Yellowstone REA 75th Annual Meeting at the Richland County Fair Event Center. Registration/Dinner is at 5:30 p.m.; business meeting is at 6:15 p.m.

McKENZIE COUNTY

Events in Watford City unless otherwise listed. CT Zone.

Wed., May 29

- 8 p.m.— Al-Anon, Sanford Room, McKenzie Co. Public Library.
- 5 p.m. - 7 p.m. — Wine tasting at The Watford, 810 3rd Ave. S.W., \$10/ticket.

Thurs., May 30

- 8 p.m.— AA Group, Northern Pump & Compression. Call 770-3603 or 770-2675 for directions or ride.

Sun., Jun. 2-Thurs., Jun. 6

- 6 p.m. - 8:20 p.m. (Nightly)— Watford City Assembly of God Church Presents "Kingdom Rock: Where Kids Stand Strong for God", all kids ages 3-12 welcome.

View all monthly events on our calendar at www.roundupweb.com.

Healthworks Closed Till Further Notice



Healthworks will be closed until further notice due to a sewer line break. Some of the damaged flooring has already been ripped up.

By Ashley Harris

Following a sewer line break, Healthworks fitness center in Sidney will be closed until further notice. Although there was not much damage to many machines or equipment, repairs to the sewer line will need to be made before they can re-open.

As far as the fitness center goes, most of the big equipment is all steel and just needs to be sanitized. The main damage is the track and flooring, which will need to be replaced. Most of the work that will need to be done is in the office upstairs with dry wall, carpet, desk and cabinets needing cleaned or replaced. None of the electric cardio equipment was hit.

Manager Scott Doty stated that everything is "still day to day."

All the construction repairs will be handled by the hospital as it's mainly all facility issues. The location of the break will require a reroute, which will delay the reopening of Healthworks. There is really no time frame on when they will re-open, as Doty stated, "I wish I knew".

For further information and updates, check out their website at www.sidneyhealthworks.org.



Waste water tanks are positioned in front of Healthworks with a hose that is pumping water out of the building.

Transportation Commission Open House

Astoria Hotel
Glendive, MT
201 California St
May 28, 2013, 4:00 pm

Public Open House
Transportation Concerns
4-6 pm

The meeting is open to the public. MDT attempts to provide accommodations for any known disability that may interfere with a person's participation in any department service, program or activity. For reasonable accommodations to participate in this meeting, contact Lori Ryan at (406) 444-7200 or PO Box 201001, Helena, MT 59620 at least two days before the meeting. For the hearing impaired, the TTY number is (406) 444-7696 or (800) 335-7592, or Montana Relay at 711. Alternative accessible formats of pertinent information will be provided upon request.

MDT Lori K. Ryan, (406) 444-7200
lryan@mt.gov.
www.mdt.mt.gov/pub/involve/trans_comm/meetings.shtml

COOKS ON MAIN
for the everyday chef

Wusthof Event
Saturday, June 1st

WÜSTHOF

Knife Sharpening
Stop In And Talk To The Experts
All Day Saturday!

Open Mon - Sat: 9am - 6pm
224 Main Street • Williston, ND
701-572-COOK (2665) • (F) 701-572-2666

It's Time To Plant!

Huge Selection of:

- Bedding Plants
- Trees & Shrubs
- Perennials
- Planters

Handy Andy's
Mon - Sat: 9am - 6pm • Sun: Noon - 4pm
13824 West Front St., Williston, ND • 701-752-6083

See Us Before You Go!

Montana Paddlefishing Starts May 15

- **Fishing Supplies**
Paddlefish
Walleye
Catfish & more!
Lalke. River
Bow Fishing
Supplies
- **Live Bait**

WE'VE ALSO GOT:
Archery Supplies • Paintball Guns & Supplies
• Rifles • Shotguns • Pistols
Hard-To-Get Ammo

AR-15s as low as \$899⁹⁹

HIGH CALIBER SPORTS

214 S. Central Ave., Sidney • 406-433-1800
M - F: 9am - 6pm • Sat: 9am - 4pm

Let's thrive: **Thrivent Financial for Lutherans**

Looking for strength and stability?
You can have both—even in today's economic environment. Consider this:

- Our eligible members have received more than \$3.1 billion in dividends since 2002.¹
- Our 2012 adjusted surplus was \$6.1 billion.
- Our members have entrusted us with more than \$82 billion in assets under management.²

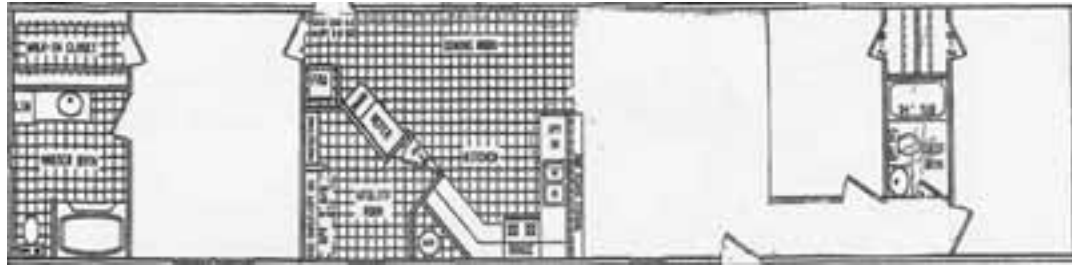
Harvey Senn, LUTCF®, FIC
Financial Associate
CA Insurance ID No 0E58464
406-433-6143

Ronald Gebhardt, FIC
Financial Associate
406-433-5287

1050 S Central Ave • Sidney, MT 59270
Toll-free 877-433-6143

¹Dividends are not guaranteed. ²As of Dec. 31, 2012.
Insurance products issued or offered by Thrivent Financial for Lutherans, Appleton, WI. Not all products are available in all states. Securities and investment advisory services are offered through Thrivent Investment Management Inc., 625 Fourth Ave. S., Minneapolis, MN 55415, 800-847-4836, a FINRA and SIPC member and a wholly owned subsidiary of Thrivent Financial for Lutherans. Thrivent Financial representatives are registered representatives of Thrivent Investment Management Inc. They are also licensed insurance agents/producers of Thrivent Financial. For additional important disclosure information, please visit Thrivent.com/disclosures. 26226A R4-13 © 2013 Thrivent Financial for Lutherans 652602

Hurry, Only 2 Left At This Price!



Own This Beautiful Brand New 16x80
3 Bedroom, 2 Bath House For Just

\$59,900

406-377-1258 • 53 Hwy 16 • Glendive, MT



Farm Credit Services Supports Their Local Communities with Over \$120,000 in Sponsorship Contributions

Submitted by Teresa Kjellberg

In 2012, Farm Credit Services of ND sponsored a wide variety of activities in the local communities we serve. As part of our ongoing commitment to these communities we contributed over \$120,000 in sponsorships to various organizations, programs and events in our business territory.

"We take pride in participating in local community events and working closely with the people whose efforts make their communities so successful," says Claude Sem, CEO. "Our Pat-NOW program keeps interest rates low for our customers which in turn provides them with savings they can use to

help grow their community," he adds.

Farm Credit Services strongly supports youth programs such as FFA, including purchase and distribution of student handbooks, their state and national convention activities, as well as 4-H including premium sales and a large donation to their 4-H camp.

We support academic and athletic events in the schools, offer \$1,000 scholarships to high school seniors entering college and hold tailgate parties to benefit school groups such as Close Up and sports booster organizations. We also helped sponsor research projects, livestock shows, local fes-

tivals, fundraisers, benefits, farm shows, rodeos and appreciation events.

Combined with the other Farm Credit Services Associations in North Dakota, we participate in sponsoring organizations including Farm Rescue, North Dakota Rural Leadership, Kids Farm Safety programs and the North Dakota Stockman's Association. We also help sponsor the livestock barns at the North Dakota State Fair, the NDSU Extension Service with local research center field days and a variety of Ag commodity groups throughout North Dakota.

Farm Credit Services is a member-owned agricultural credit association providing loans to farmers and ranchers for real estate, machinery, livestock and operating needs. FCS also offers life & disability and crop insurances to the rural community. They serve 17 counties in northwest North Dakota through branch offices located in Minot, Bottineau, Carrington, Rugby, Williston and Crosby, including Bowbells Crop Insurance (Bowbells), Schaan Crop Insurance (Rugby) and Ward County Crop Insurance (Minot).

9th Annual Children's Fishing Derby

The 9th Annual Children's Fishing Derby will be held Saturday, June 8, 2013, at the Watford City Fishing Pond and Nature Park; 9 a.m. to 11:30 a.m. All children ages 12 & under and their families are welcome to attend. The derby is free of charge and includes lunch to be served around 11 a.m. Each child will also receive a participation prize. For more information, call Sharon Prestangen at 701-842-2393.

THERE WILL BE AN OPEN HOUSE ON SUNDAY, JUNE 2, 2013 FROM 2:00-4:00 P.M. or by appointment

OWNERS: Russell D and Heather L Becker whose address is 309 Evans, Bainville, MT will offer the following property to the public at auction. The final bid will be subject to their approval. The Owners reserve the right to accept or reject any and all bids.

House & Real Estate AUCTION

Location: 309 EVANS, BAINVILLE, MT

THE AUCTION WILL BE AT THE PROPERTY • TO BE SOLD IN (2) PARCELS

THURSDAY, JUNE 13, 2013 6:00 P.M.

AUCTIONEERS NOTE:

Russell and Heather are planning to move West to be near family and are offering their current home at auction. The Owner's have put in approximately \$50,000.00 in improvements. This home features an updated living room w/hardwood floors and tongue & groove wood walls. Just recently the bathroom was updated. The house has new siding, windows and doors. There is a new septic line to the main line. This is a very nice home with an empty lot next to it to be sold, as well. Also, the school in Bainville has expanded to accommodate more children. Hope to see you on THURSDAY @ 6:00 PM. Rick



PROPERTY LOCATION: Bainville, MT- Turn right at Post Office, for 1 block, turn left on Evans

LEGAL DESCRIPTION: PARCEL ONE LOTS 2 and 3, BLOCK 3 of Bruegger's Addition to the Townsite of Bainville, Roosevelt County, Montana, according to the official plat or map filed in the Roosevelt County Clerk & Recorder's Office (INCLUDES HOUSE & GARAGE) PARCEL TWO LOT 1, BLOCK 3 of Bruegger's Addition to Town of Bainville (BARE CORNER LOT)

HOUSE DESCRIPTION: 1050 sq ft on Main Floor w/2 bedrooms & updated full bath, 770 sq ft basement w/2 rooms w/non-conforming windows, full bath downstairs, fridge, stove, washer/dryer stay with house, 432 sq ft unattached garage



IMPROVEMENTS: (Approximately \$50,000.00 in improvements) New siding, windows, doors, updated living room w/tongue & groove wood walls & hardwood flooring, new bathroom, new tin roof, new sewer line to the mainline

A title commitment has been ordered and will be available, at their request, to prospective buyers for inspection prior to sale day. The above may or may not be the proper legal description; it was taken from the Richland County Tax Receipts.

TAXES: Taxes will be pro-rated from the day of closing.

TITLE INSURANCE: Standard owner's title insurance will be provided by the seller through Roosevelt County Abstract Company, 228 3rd Ave S, Wolf Point, MT 59201 (406)653-2800

TERMS: Cash, 10% down sale day, the balance due at closing approximately



30 days from sale date at the office of Roosevelt County Abstract Company, 228 3rd Ave S, Wolf Point, MT 59201 (406)653-2800

BUYERS PREMIUM: A 2% Buyers Premium will be added to the winning bid price to arrive at the total contract price paid by the purchaser.

Your bid is considered acceptance of the terms of this auction. If you, the Buyer fails to close, the down payment is non-refundable. If the Sellers fail to close, 100% of the down payment will be returned. At this time, there is no known reason that the Sellers would not be able to close. All funds are held in the escrow account of Roosevelt County Abstract Company, 228 3rd Ave S, Wolf Point, MT 59201 (406)653-2800

All information is from sources deemed reliable, but is not guaranteed by the Sellers or the Auctioneers. Offering is

subject to error, omission, and approval of purchase by owner. We urge

independent verification of each and every item submitted to the satisfaction of any prospective buyer. It is every potential bidder/purchaser's sole responsibility to accomplish his or her due diligence in whatever manner he or she deems advisable. Announcements made sale day take precedence over any printed materials. The property sells "As is-Where is."

R-K Statewide Auction Service and its auctioneers are acting solely as auctioneers for the Sellers.

FOR MORE INFORMATION CONTACT: R-K Auction Company www.r-kauction.com Rick Kniepkamp (406)485-2548 or (406)939-1632 cell



purchase for items. We urge independent verification of each and every item submitted to the satisfaction of any prospective buyer. It is every potential bidder/purchaser's sole responsibility to accomplish his or her due diligence in whatever manner he or she deems advisable. Announcements made sale day take precedence over any printed materials. The property sells "As is-Where is." R-K Statewide Auction Service and its auctioneers are acting solely as auctioneers for the Sellers.



WE SELL & ADVERTISE ACROSS THE UNITED STATES
www.r-kauction.com
Rick Kniepkamp (406) 485-2548
or call (406) 939-1632
ELA RIVER PRINTING, SIDNEY, MT

WE DO WINDOWS! NOW is the time to replace your cold, drafty windows.



- We specialize in replacing windows of most styles and sizes with energy-saving THV Composit Windows
- We sell the ultimate insulating glass option for THV with Triple Pane Insulated Glass
- Our THV certified installers do a complete job from start to finish

Martini SIDING & WINDOWS
406 488-2468

WE COVER YOUR INVESTMENT
SIDNEY, MONTANA



Toni Martini

THV Composit
Windows & Doors

TOP LINE ENGINEERING

- CIVIL ENGINEERING
- LAND SURVEYING
- LAND PLANNING
- SITE DEVELOPMENT
- & ENTITLEMENTS

Arizona Office
4711 East Falcon Drive, Suite 354
Mesa, Arizona 85215
Phone: 480-949-3822

Montana & North Dakota Office
333 E. Main St., Box 884
Sidney, Montana 59270
Phone: 701.570.2844

Email: info@toplineengineering.com | Web: www.toplevelineengineering.com



**Got Kids? Got Stuff?
Get a Ryan Family Car!**


1212 W. 2nd St, Williston
www.driveryan.com

701-577-1111



HONDA

2013 Honda CR-V LX



#20138

\$23,414

A Little Bit Country Degree Days Mounting for Alfalfa Weevil

Submitted by Warren Froelich

As I write this column (May 21) the North Dakota Agricultural Weather Network reports there have been approximately 200 accumulated insect degree days in the Williston and Stanley area. This data has some implications as to when we can expect adult alfalfa weevil emergence which is around 250-300 degree days. Degree days are calculated by averaging the high and low temperatures of each day and subtracting the base of 48 degrees Fahrenheit. Depending on day time temperatures, it is possible adult emergence could occur by the time you read this.

Adult weevils do very little damage to alfalfa plants. It is the larvae which begin to hatch from the eggs they lay at about 300 accumulated degree days. During the initial egg hatch, the feeding of the little larvae is light but by the time 500 degree days are accumulated, the larvae are large enough to cause considerable damage to the alfalfa plant. The feeding continues until approximately 800 degree days have passed.

Scouting of alfalfa fields should begin immediately after egg hatch and fields should be scouted weekly for larvae up through the first cutting. Fields should be scouted in an "M" pattern or

by selecting random sites within the field, with a minimum of five sampling sites per field. Large fields should have more sampling sites. Be sure your sampling pattern is representative of the entire field. Just don't scout only along the edges or in small areas.

For sampling, you will need a sharp pruning shear, a white 5-gallon bucket and pencil, paper and calculator. At each sampling site, select a minimum of 30 plants and cut them off the base. Lower the cut plants into a 5-gallon pail and vigorously beat the plants in the pail to dislodge the larvae. Record the 1) number of plants sampled, 2) the total number of larvae, 3) estimate and record percent feeding damage (defoliation), and 4) the height of the alfalfa. Then, total the number of larvae and divide by the total number of plants sampled to calculate an average number per plant. Also, calculate percent feeding damage and plant height averages for the field.

The NDSU Entomology Department does not recommend the use of sweep nets for sampling because results are often highly variable and inaccurate. Sweep nets can be used to determine the presence of adults and larvae at or prior to the typical egg hatch of 300 degree days.

Several factors must be

considered when making alfalfa weevil management decisions. Plant height, estimated yield, crop market value, management cost and plant injury based on the number of larvae per stem must be considered. North Dakota entomologists have established a recommended economic threshold based on plant height, crop value, treatment cost and number of larvae. This table can be found at our website: www.ag.ndsu.edu/williamscountyextension.

After the first cutting has been harvested, be sure to scout for larvae where the windrows were located. When the alfalfa is swathed, the larvae usually crawl below the windrow for shelter and remain there until pupating.

When the decision is made that insecticidal control is needed, pay attention to the pre-harvest interval. Most labels also have a pre-grazing interval.


Transplanting Trees – Match Spade to Tree Size

A tree's size and potential for moving is determined by its trunk diameter or caliper which is measured about six inches off the ground for trees that are four inches or less in diameter. The caliper is measured about 12 inches off the ground for trees with a trunk diameter larger than four inches. As trees are se-

lected for moving, it's important to know the capacity of the tree spade. A common mistake is thinking that if the tree spade can dig and lift the tree, it is a large enough machine to do the job.

Although most tree spades can dig and lift much larger than they are designed for, this does not mean that it will remove enough soil and roots for successful transplanting. A high percentage of the tree's roots are lost when the tree spade cuts into the soil to create the rootball. The percentage of roots that are lost during this process increase dramatically if the tree is larger than the rated capacity of the machine. Tree spade manufacturers rate the capacity of their machines differently. As a rule, the tree spade diameter should be 10 times the trunk caliper. There are exceptions though. Trees with wide, shallow root systems, such as poplars, will lose a higher percentage of roots than will a deep-rooted tree. Trees that have a deep taproot, such as oaks, are much harder to dig and their chances of survival will be less than that of a non-tap root tree.

Yellowstone Chiropractic Clinic
 (406) 433-4757 222 2nd. Ave. SW
 1-866-433-4757 Sidney, MT 59270



Dr. Ryan Laqua
Chiropractic Physician

• Sports Injuries • DOT Physicals
 • Personal Injuries & Pain Conditions



J&S FEEDS

1000 N. MERRILL • GLENDIVE

Happy Spring!



COME IN FOR ALL YOUR BRANDING NEEDS. CALL AHEAD, WE CAN HAVE IT READY!

Fly Mineral Is In

- Purina • Vaccines
- Crystalyx • Linn Panels
- Horse Tack
- QLF (Quality Liquid Feed)
- Animal Health
- Western Accessories
- Montana Silversmith

Most things can be sent overnight!

(406) 377-2180
 Mon-Fri: 8 - 5 • Sat: 8 - 12
 "Animals Make Better People, Purina Makes Better Animals"

Roundup

WEB.COM

Last 5 Days To Save

Before The Sidney Finnicum's Store Closes Forever!

Get Up To

90%

off

Our Final Day Is Sunday, June 2!

Wed-Sat: 9 - 7pm • Sun: Noon - 5pm
 Limited To Stock On Hand • Cash And Carry Only • No Returns



1051 S. Central Ave.
Sidney • 406-433-5373

Why Rent When You Can Buy For Less ??

 Pulse 700 \$49,900	 Elite 303 \$59,900
 Pulse 732 \$79,900	 Elite 405 \$99,900

Land/Home Packages & Turn Key Financing
 Missouri Meadows, 1 Acre Lots in Williston
 Easy Financing, Let us do it all for you!
 3820 6th Ave. W, Williston - Next to Walmart Tire Center

701-774-5310



SUMMER FUN SPECIALS

Great Grad Gifts Too!

2008 Dodge Avenger



#6656

\$11,495
 \$1,500 off
 \$9,995
 \$2000 down
\$7,995

60 mo @ 4.99% = \$151¹⁵

2011 Dodge Avenger



#6559

\$16,995
 \$3000 off
 \$13,995
 \$2500 down
\$11,495

60 mo @ 4.99% = \$217³²

2008 Dodge Caliber



#6575

\$13,495
 \$2000 off
 \$11,495
 \$1600 down
\$9,895

60 mo @ 4.99% = \$187⁰⁷

2010 Dodge Caliber



#6597

\$15,995
 \$2000 off
 \$13,995
 \$2500 down
\$11,495

60 mo @ 4.99% = \$217³²

2005 Jeep Liberty



#6642

\$8,995
 \$1000 off
 \$7,995
 \$1900 down
\$6,095

48 mo @ 4.99% = \$140⁶³

Subject to credit approval. Does not include document fees, registration & taxes.



Savage Senior Citizen Center Celebrates 40 years

The Savage Senior Citizen organization began the spring of 1973. In the beginning the group met at various churches with 10 to 14 members. In 1976, the new firehall was completed with room to accommodate the senior citizens. In 1979, the organization purchased the Madsen Hardware building. The purchase was realized by a grant, their savings and generous donations. The center is still open at this location today. The center serves congregate meals every Thursday at noon, with coffee and goodies which are ready by 9:30. The Savage Senior Center is an active group, participating and supporting many Savage activities. Presently, the center has 60 active members, including fifteen over 80 years of age and four over 90. We are very proud of our center and thank the ten members who began it in 1973. Back Row L to R: Edgar Fisher, Sandy Ler, Elmer Inhoff, Norma Etzel, Bob Koeppler, Jean Odenbach, Leonard Odenbach, Vivian Reed and Frank Reed. Front Row L to R: Madeline McVay, Luella Hafeman, Gertrude Chance, Melda Asbeck, Violet Ronningen and Pat Sult. (Submitted by Terri Miller)



Chalk Art

First grade art students in Fairview took advantage of beautiful weather on Wednesday to create some terrific chalk art in front of the school. Pictured clockwise from bottom left are Grace McPherson, Allison Weiss, Landen Thompson, Halley Mullin, Katrina Ridl and Jacey Iversen. Walking by the tree is Curt Rice and hiding behind Katrina is Enzo Harris.

AUCTION

FRIDAY EVENING, June 7, 2013, 5:30 PM
At the E.P.E.C., 313 S. Merrill Ave., Glendive, MT
 OPEN HOUSE: Friday, June 7, 1 PM to 5 PM

Denny & Dorothy are leaving Glendive and moving to a smaller home. They will sell the following excess personal property. This merchandise has been well cared for and is clean and in good condition.

- | | |
|--|--|
| 45" Round Oak Table, 1 Large Leaf | Toro 521 Snowblower w/ Elec Start & Chains |
| w/ 6 High-Back Chairs w/ Upholstered Seats | Toro 21" Snowblower, |
| Loveseat, Small Round Pedestal Table | Toro Leaf Blower |
| Upholstered Chairs: 1 Berry, 1 Emerald Green, | Tray Bilt 21" SP Mower, 6.75 HP w/ Bag |
| Light Green Recliner, Tan Recliner | Lawn Boy 6.5 HP Mower w/ Bag, |
| Brown Leather Recliner, Storage Footstool | Sm Hand Cart |
| Glider Rocker w/ Footstool, Telephone Stand | Stihl Gas Weedeater, |
| Wooden Round-Back Swivel Chair w/ Cushion | Homelite 17" Elec Hedge Trimmer, |
| Oak Storage Cabinet w/ Glass Doors | Elec Garden Groom "Pro", |
| Sm. Corner China Cabinet w/ Curved Glass Door | Outdoor Bench, Bird Baths, Bird Feeders |
| Wooden Desk, 2 Wooden Chairs w/ Uphol. Seats | Wall Mount Fountain, Flower Pots & Yard Decor |
| Wooden Bench w/ Heart Decor, 2 Floor Lamps | Patio Table w/ Umbrella & 4 Folding Chairs |
| 12-Drawer Chest of Drawers, 4-Drawer Chest | Patio Bench Swing w/ Canopy, Croquet Set |
| 3-Section White Storage Drawers, Plant Stand | 5 Pc White Wicker Loveseat, 2 Chairs, Coffee Table |
| Sm. 4-Drawer Nightstand, 3 Plastic File Boxes | & Mag Rack, 6' & 5' Alum Ladders |
| End Table/ Mag Rack, Assorted End Tables | High Pressure Washer, Little Giant Ladder |
| Round End Table w/ Glass Top & Shelf | Power Craft 10" Table Saw, 20 T Hyd Jack |
| Sony 42" Projection-Style Flat Screen TV, Remote | Craftsman 10" Miter Saw w/ Stand, 4" Bench Vise |
| Magnavox Color TV w/ Remote, Child's Rocker | Skil & Makita Belt Sanders, Other Sanders |
| White Book Shelf w/ Glass Doors, Hall Tree | Benchtop Bench Grinder, 5 Gal. Shop Vac |
| Kenmore Microwave, Microwave or TV Stands | Homak Rolling Tool Box, Smaller Toolbox |
| 3-Shelf Cabinet w/ 2 Drop Leaves | 12-Compartment Shop Cabinet / Bench on Wheels |
| Metal Shelving, Bissell Carpet Shampooer | B&D Folding Workmate, Rockwell Sonic Tool |
| Plastic Shelving, Cosco Folding 3-Step Ladder | Milwaukee Sawzall, Craftsman Skill Saw |
| Radiator-Style Elec Heater, Wooden Mag Rack | Craftsman Saber Saw, B&D Elec Drill |
| Kenmore Trash Compactor, Assorted Pictures | Levels, Saws, Clamps, Squares, Drop Cords |
| Coronado 15 Cu Ft Chest Freezer, Picture Frames | Misc Yard Tools: Shovels, Rakes, Bars, Gas Cans |
| ProForm 490LS Crosswalk Treadmill, Folds Up | Antiques & Collectibles: |
| Misc Kitchen Appliances: Asstd Coffee Makers, | Antique Doll Buggy, RR Lanterns |
| Pannini Grill, GE Grill, Elec Food Dehydrator | Old Tea Tins and Spice Cans, Blue Jars |
| Wine Decanter Set, Glass Vases, Mugs & Cups | Old Milk Bottles, Old Colored Bottles |
| Green Snack Sets, 2 Humidifiers | Silver Trays and Silver Cups |
| Plastic Containers, 3 Pc Luggage Set, Games | Guest Consignment: 1940's 3 Pc Double Bedroom Set: |
| Assorted Baskets, Stuffed Animals, Books | Bed w/ Head & Foot Boards, Mattress & Box Spring, |
| Lots of Christmas & Other Holiday Decorations | Chest of Drawers, Dresser w/ Old Round Mirror |
| Lot of Miscellaneous | and Vanity Bench, Med. Brown, Good Condition |
| | Round Piano Swivel Stool w/ Claw Feet |



OWNERS:

DENNY & DOROTHY MINDER

TERMS: CASH or GOOD CHECK

Sale by **GRANMOE AUCTIONS**
GLENDEIVE, MT

RON: (406)265-4422, BAY: (406) 217-3273

www.actionautochryslerdodgejeep.com

ACTION AUTO

For your transportation needs, call:
 433-2312 - 1-800-788-2312
 220 East Main, Sidney, MT



Gary McPherson
 Hw: 485-7759



Gary Schopp
 Cell: 488-2922



Jon Nelson
 Cell: 206-669-0281

Jitterbugs Christian Preschool Ends First Year

By Ashley Harris

After teaching Kindergarten in Sidney for 3 years, Michelle Sletvold realized that a good majority of the students were not quite ready to begin school. Although it took her about a year to find a location, Sletvold has started her own preschool to properly prepare children for Kindergarten. Many individuals have aided financially to this dream becoming a reality for Sletvold.

Her dream, which she calls The Jitterbugs Christian Preschool, operates in the lower level of the Church of the Nazarene. Sletvold, who has taught for 9 years, has one other main teacher, BobbiJo Hackman, who has worked as a paraprofessional in the special education room at Central School.

With the first year of operation under their belts, both teachers are very happy with how it went. So much so that they will be taking 60 students next year, compared to the 30 they had this year. During a normal school day, children get play time, social time, snack time, as well as calendar time, math activities, art and academic lessons. One of their main focuses is on social skills, such as walking in line, being respectful and taking turns.

Jitterbugs offers two separate classes, the 'Cuddlebugs' for ages three to four and a half and the 'Doodlebugs' for ages four and a half up to pre-kindergarten. Cuddlebugs meets Monday through Thursday from 8 to 11am, while the



Cuddlebug graduates wait to receive their diplomas during graduation Thursday, May 23. Back row L to R: McKenna Haralson, Jaxson Burger, Logan Churchill, Skylee Herman and Maverick Hunter. Middle row L to R: Olivia Klose, Emma McPherson, Connor Hastings, Stella Entzel and Rye Mathern. Front row L to R: Isaiah Riedle, Makenna Sparks, Olivia Schilling, Bailey Freebury, Micah Haralson and McKenna Tiesen. Not pictured is Campbell Trudell, who had already accepted her diploma.

Doodlebugs meets Monday through Thursday from 12 to 3pm. Both groups follow the Sidney Public School's calendar days, which will begin September 4.

This summer they will also offer playschool, preschool and entering kindergarten classes beginning June 17 and going until July 25. Summer classes will be more spread out, with playschool being held Monday and Wednesday from 8 to 11am, preschool Tuesday and Thursday from 8 to 11am and the entering kindergarten class Tuesday through Thursday from 12:30 to 3:30pm. The playschool group (Snugglebugs) will be for two and half year olds, with the Cuddlebugs and Doodlebugs the same ages as during the Fall. Snugglebugs do not have to

be potty trained. The summer session will be aimed for introducing new ideas to the younger group and reviewing for the older groups.

Coming soon is a new playground as well as incorporating science and nature into the curriculum for more hands-on learning. Also coming this fall are many fun and exciting new additions.

Prices for summer will be \$144 for snugglebugs and cuddlebugs and \$250 for doodlebugs. Fall prices are \$200 per month.

For more information please visit the website at www.jitterbugschristianpreschool.com or email to jitterbugspreschool@hotmail.com. To sign up you can call the preschool at 406-433-5887 or Michelle Sletvold at 701-260-8229.

Jitterbugs would like to personally thank all the supporters who are making this possible, especially those that gave the initial significant amounts as well as the

Church of the Nazarene for providing the space for our classes.

NOW OPEN

- DOT Physicals
- Sports Physicals
- Drug & Alcohol Testing
- Sports & Work Injury Treatment

FINK FAMILY Chiropractic

Call for an appointment • 433-BACK (2225)
8 a.m. - 6 p.m. • Monday - Friday
Saturdays by Appointment Only
Michael Fink, DC
120 E. Main Street • Village Square Mall • Sidney, MT
www.finkfamilychiropractic.com

The Ducky Draw
June 1st - 15th **Is Back!**
Draw A Duck For Discounts!
5-15% off
Excluding Firearms

THE TRADING POST
111 East Main • Sidney • 406.433.7676



Pictured here this years Doodlebug graduates. Back row L to R: Brynn Hill, Evan Combie, Brooklyn Wunder, Aaron Filler, Talena Hambro. Middle row L to R: Teacher Michelle Sletvold, Abby O'Toole, Parker Wunder, Dace Riedle, Lexie Albright, Teacher Bobbi Jo Hackman. Front row L to R: Jhett Manuel, Ben Dietrich, Hazen Manuel, Wesley Lockner. Not pictured: Peyton Cayko



Doodlebug graduates had some fun while performing for their families during the ceremony, Thursday. Back row L to R: Brynn Hill, Evan Combie, Brooklyn Wunder, Aaron Filler and Talena Hambro. Middle row L to R: Abby O'Toole, Parker Wunder, Dace Riedle, Lexie Albright. Front row L to R: Ben Dietrich, Hazen Manuel and Wesley Lockner. Not pictured: Jhett Manuel and Peyton Cayko

Millers' Corner
Convenience Store, Deli & Catering

We Cater
to your suitable location

Breakfast
Brunch | Lunch
Dinner

Family Gatherings
Reunions
Weddings
Business Meetings
Conferences
Holiday Parties

406-433-4041
2201 West Holly, Sidney

ANNUAL MEETINGS ARE A BOTHER!

YES, THEY ARE. BUT ANNUAL MEETINGS OF YOUR ELECTRIC COOPERATIVE ARE NECESSARY. AND IMPORTANT. THE MOST IMPORTANT DAY IN THE YEAR FOR YOUR CO-OP... SO PLEASE BOTHER TO ATTEND...

Your 75th Annual Meeting
Wednesday, June 5th

Richland County Fair Event Center

Registration/Dinner 5:30 p.m.
Business Meeting 6:15 p.m.

- Child Care & Face Painting
- Door Prizes • Director Elections
- 20 "Luck of the Draw" Scholarship Drawings (Member Parent/Guardian AND Student MUST BE PRESENT to be eligible to win)
- "Progressive Drawing up to \$900"

Must be Present at time of drawing

Lower Yellowstone REA
3200 W Holly, Sidney • 406-488-1602
www.lyrec.com
Your Touchstone Energy Cooperative

Unreal RC
 The Ultimate in Remote Control Hobbies
Brushless Electric - Greater Speed and Reliability
GAS & ELECTRIC CARS, TRUCKS, PLANES, BOATS AND HELICOPTERS
 **701-577-1032**
 Located In Chaney's Total Auto

Rau Program

Rau Elementary held their year end program May 23. Right: Jed Fox takes the role as "Piano Teachin' Man." Below clockwise starting top left: Cooper McNally has the crowd rolling with laughter during his solo. (L-R) Kierra Huotari, Bethany Wells and Brielle Gorder are the cheerleaders during the Rau's "It's Saturday" year end program. Caitlin Cole, a graduating sixth grader enjoys her very last program out at Rau. Wacey Hovde sings loud and proud for the crowd.



Save Time & Money With Great Communication!
 Keeping in Touch

Mobile Radios
 • 25 to 110 watts
 • 8 to 128 channels
 • small, easy to use

Starting at \$359⁰⁰

Hand Helds
 TK-2302
 Hand Held
 5 Watts w/ scan

Authorized KENWOOD Dealer

Call Larry today at...
ADVANCED COMMUNICATIONS
 Just North of McDonald's • Sidney, MT
 406-433-1659 or Toll Free 1-866-433-1659



CROWN TREE HOMES LLC

MODULAR & MANUFACTURED HOMES

Licensed General Contractor - Excavation to Completion



Add Garage or Basement to any Home

SPECIAL PRICE \$168,900

- 1,508 Sq. Ft. - 3 Bedroom, 2 Bath
- ✓ Includes Unit
 - ✓ Includes Full Concrete Basement
 - ✓ Includes Excavation, Digout & Back Fill
 - ✓ Includes Set & Finish
 - ✓ Includes Delivery
 - ✓ Includes Basement Stairs

Excavation to Completion Home Plans

Building Complete Homes from Excavation to Finish

SAVE

Let us do all the work from Excavation to Completion. We will bid your favorite plan with no cost to you!

MODEL HOME OPEN HOUSE
 SAT, JUNE 1ST & SUN, JUNE 2ND
 12:00 pm - 4:00 pm

Williston Hwy. 1804

Go East of Williston on 1804 to 133rd Ave NW, turn South.

★ 5040 133rd Ave NW Williston, ND

SPECIAL PRICE \$184,900

- 2,027 Sq. Ft. - 4 Bedroom, 2½ Bath
- ✓ Includes Unit
 - ✓ Includes Full Concrete Basement
 - ✓ Includes Excavation, Digout & Back Fill
 - ✓ Includes Set & Finish
 - ✓ Includes Delivery
 - ✓ Includes Basement Stairs

Excavation to Completion Home Plans

nsieler@gmail.com

402-429-0620



RTC
Smarter. Better. Faster.
www.RTC.coop
VOICE • DATA • VIDEO




Watford City Girls Fastpitch Softball

Thurs.-Sat., May 30-June 1
Elmwood Park • West Fargo, ND




Mon.-Sat. 9 a.m.-10 p.m.
Sun. 4-9 p.m.
701-842-2771
1/2 mile south on Hwy. 85



329 N. Main • Watford City
701-444-6484
toll free 800-411-7590




908 4th Ave. NE
Watford City, ND
701-444-9288



Keene, ND
701-675-2700

Back Row (L to R): Tori Hopkins, Kaytlin Grimes, Tessa Dwyer, Allison Mosen, Sarah Murillo, Taylor Dwyer, Maddy Hogue. Middle Row (L to R): Nonea Seal, Morgan Bird, MacKenzie Kolteryahn, Brittany Taves, Alivia Olson-Brenna, McKenna Mayne, April Spruell. Front Row (L to R): Danika Brown, McKayla Haugeberg, Kara Langerud, Tarynn Jacobson, Brea Jore, Karissa Mosen, Addison Sundeen, Mikayla Whiteley, McKayla Spellman.



Open: 4 pm - 1 am
Monday- Saturday
Owners:
Malissa & Denise
701-444-3594
125 N Main
Watford City, ND



Alexander, ND
701-828-3352

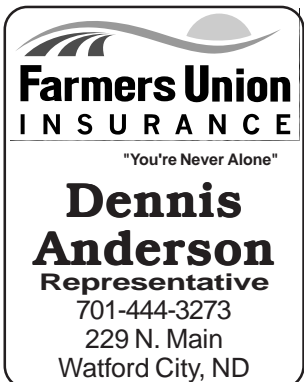


Watford City Boys Baseball

Thurs.-Sat., May 30-June 1
Memorial Park • Mandan, ND




Coca-Cola Bottling
Williston, ND
701-572-6746



Farmers Union
INSURANCE
"You're Never Alone"
Dennis Anderson
Representative
701-444-3273
229 N. Main
Watford City, ND




Service & Rental Tools
Box 346
Watford City, ND
701-842-3350



Stop In For A Cold One!
D&M's Office
701-842-6132
115 Main • Watford City, ND

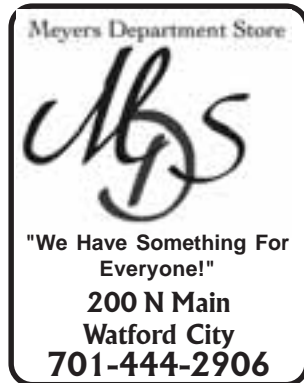
Front row (L to R): Jackson Voll, Ross Boudreaux, Devyn Marquardt, Tyler Krabbenhoft, Keegan Thompson, Brandon Taylor, Dustin Kleppen, Josh Rockeman, Nick Wright, Tim Peterson, Judd Johnsrud, bat boy. Back Row: Quayde Shores, Nate Egeberg, Dewey Purcell, Mitchell Liebel, Andrew Sampsel, Tyler Bates, Brice Brenno, Dakota Neether, Davis Zubke, Brandon Allex, Brandon Roff, Justin Johnsrud, coach. Not pictured: Brett Skarda, Hunter Neether, Jantzen Gates.



101 South Main
Watford City, ND
701-444-3639




For all your application & crop protection chemical needs!
TAYLOR
Ag Service
Kent Taylor, Owner
Watford City, ND
701-444-3772
Licensed in ND & MT



"We Have Something For Everyone!"
200 N Main
Watford City
701-444-2906



ONE NATION UNDER GOD
Mitchell's is a great place to work!
www.mitchellsoilfield.com



Agents with answers.
Eric Mogen
Watford City
444-6048
Nodak Mutual Insurance Company
www.nodakmutual.com



500 2nd Ave SW
701-444-6411
www.mckenziecountybank.com
MEMBER FDIC

The 2013 North Dakota State Class "B" Baseball Tournaments to be Televised

Submitted by Jordan Hassler

BEK Sports Network is proud to announce live coverage of the Semifinals and 3rd place/Championship Rounds of the State Class B Baseball Tournament May 31st and June 1st, from Memorial Ballpark in Mandan, ND.

State baseball coverage begins on Friday, May 31st with Semifinal action starting at 4:15 p.m. CST., and then Saturday, June 1st, coverage continues with the 3rd Place game followed by the Championship game with the round beginning at 4:15 p.m. CST.

BEK Sports has partnered with thirteen TV service providers across the state of North Dakota allowing for the tournament will be delivered to over 65,000 households.

Partnering TV service providers that will be televising the events include:

BEK Communications of Steele, N.D. – Channels 28, 29 & 30

Cable One of Fargo, ND – Channel 72
Dakota Central Telecommunications of Carrington, N.D. – Channels 19, 20 & 21

Dickey Rural Networks of Ellendale, N.D. – Channels 7 & 95

Midstate Telephone Company of Stanley, N.D. – Channels 17 & 18

North Dakota Telephone Company of Devils Lake, N.D. – Channels 151, 152 & 153

Northwest Communications Cooperative, Ray, N.D. – Channels 23 & 24

Polar Communications of Park River, N.D. – Channels 70, 71 & 72 (digital); Channel 3 (analog)

Red River Communications of Abercrombie, ND – Channels 3001,3002,3003

Reservation Telephone of Parshall, N.D. – Channels 21, 22 & 23

SRT Communications of Minot, N.D. – Channels 22 & 322 (cable); Channel 118 (SRTVision)

Turtle Mountain Communications, Langdon, N.D. – Channels 17, 18 & 19

United Communications of Langdon, N.D. – Channels 17, 18 & 19

The tournament will be delivered to over 65,000 households across the state.

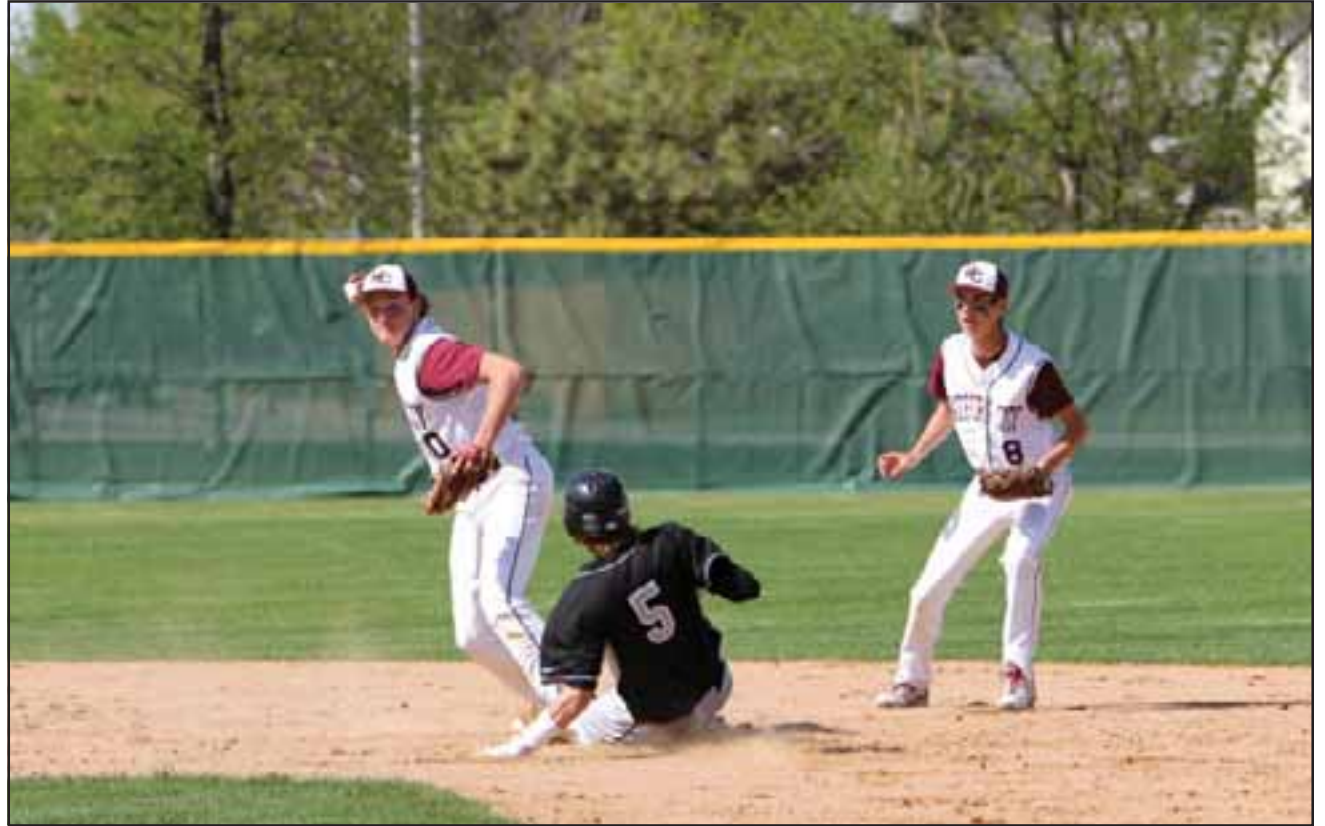
BEK Sports is highly valued, live local content. The content is produced by the BEK Sports Network and exists through a partnership between various North Dakota Telecommunications cooperatives and companies. BEK Sports

is produced by an affiliation with, and assistance from local students, schools, educators, parents and volunteers providing a unique training opportunity. BEK Sports provides technology education and equipment to students and people of the region to produce live, local high school sports for BEK Sports.

BEK Sports is a subsidiary of BEK Communications Cooperative, founded in 1952, a multi-faceted communications service company headquartered in Steele, North Dakota. The company provides facility based voice, Internet, Ethernet

and digital television services, voice and surveillance cloud based services, live sports broadcasting, hospital and business communications solutions, to more than 7,000 customers in south-central North Dakota. The company emphasizes an intimate local service experience and a broad portfolio of high quality communications services at a reasonable price.

More information about BEK Sports can be found at www.beksports.com.



Watford City Baseball

Watford City's Brandon Alex turns a double play during the Region 7 Baseball tournament against Lewis & Clark. The Wolves lost 2-3 in a tight battle against Lewis and Clark but came back to defeat MLS 9-0. Watford City, Lewis and Clark and Trinity Christian will battle for the title and a trip to the State tournament in Mandan May 30, 31 and June 1. (Photo by Kathy Taylor)

THE BUSINESS ROUNDUP
REACH 26,500 READERS IN THE ENTIRE MONDAK REGION
406-433-3306 OR 800-749-3306 ~ INFO@ROUNDUPWEB.COM
GO TO WWW.ROUNDUPWEB/DIRECTORY FOR DIRECT LINKS TO COMPANY WEBSITES & LOCATIONS **\$25⁰⁰/WK**

NICK JONES REAL ESTATE REALTOR®
TRUCK ROUTE SOUTH, SIDNEY
OR CONTACT ONE OF OUR AGENTS:
NICHOLAS J. JONES • DENNIS WICK • JUSTIN JONES • JERRIAK FRAZKEN • KRISTIN LARSON
BROKER 406-480-1544 406-480-1350 406-480-9525 406-478-3173 406-480-5138 406-480-0915
WWW.NICKJONESRE.COM

S SERVICES, INC.
Oil Field & Industrial Construction
2265 S. Central Ave.
Sidney, MT 59270
Email: iss@slservices.net
Phone: 406 433 6754
Fax: 406 433 6755
www.slserviceinc.com

Beagle PROPERTIES INC.
View all our listings at
www.beagleproperties.com

DOORBUSTIN
Portables & Septic Service, LLC
Blaine Rogers, Owner
Office: (406) 433-7588
PO Box 1803 Sidney, MT 59270 Fax: (406) 433-7588
Service: (406) 488-0915
www.doorbustnportablessepticsevice.com

MD HOSE & FITTING **DIXON** **Parker**
Hours: 7 a.m. - 5 p.m. Mon. - Fri.
205 10th Ave. S. E. Sidney • Sidney Red-E-Mix West Building
P: (406) 433-1590 • After Hours: (406) 478-3116
mdhose@midrivers.com

SONDA'S solutions
Specializing in FR Clothing
OFFICE: 406-433-6757 • CELL: 406-697-7153
2221 S. CENTRAL AVENUE • SIDNEY, MT 59270
FAX: 406-433-6755 • WEBSITE: WWW.SONDASSOLUTIONS.COM

RV Depot
RV Parts & Mobile RV Repair
including in stock
• water heaters • furnaces • air conditioners • special orders available
Mon-Sat: Check for hours.
701-842-2306 • 305 S. Main • Watford City, ND

Brandon Ensrud Journeyman Electrical Supervisor
Cell: (406) 480-4061
brandon.agri@gmail.com
Sax Electric
ELECTRICAL CONTRACTOR & SUPPLIER
Licensed in Montana & North Dakota
Office: (406) 488-8066 1775 S. Central Ave.
Fax: (406) 488-8067 Sidney, MT 59270

CUSTOMER SERVICE IS OUR #1 PRIORITY
BORDER
STEEL AND RECYCLING, INC.
Farm & Ranch Products & Construction Materials. New Steel, Aluminum & Stainless.
Brady Smelser • Tim Mulholland • Kelly Moody • Bret Smelser • Ernie Gawryluk
Sidney Glendive Williston Plentywood
35002 CR 123 2703 W. Towne St. 13896 W. Front St. Hwy 16 East
406-433-7737 1-800-423-5219 1-800-820-5493 406-765-2624
1-855-810-2995

The Roundup Classifieds

Reach Over 21,000 Readers Each Week
In Eastern Montana & Western North Dakota
And Always On The Internet at roundupweb.com
(Paypal required for online purchases)

\$7 up to 30 Words
Classy Deadline: Noon Monday

Add a photo to your classy online!
(Additional Charge)

HELP WANTED

CARRIERS WANTED

Need extra cash or want to get some exercise? We have carrier routes available in most parts of Sidney. Call 406-433-3306, or fill out application at The Roundup, 111 W. Main, Sidney.

HELP WANTED

The Roundup Newspaper is looking for a freelance writer to cover the Sidney, Watford City & Williston areas. Pick up an application at The Roundup office located at 111 W. Main, Sidney or call 406-433-3306 for more information.

COOKS, DISHWASHERS & SERVERS

Wage DOE. Apply in person at Cattle-Ac, 119 N. Central Ave., Sidney, MT.

HELP WANTED

Richland Opportunities, Inc. (ROI) has a variety of shifts open to support adults with developmental disabilities. Benefit package available for full time positions and partial benefits for part

time. Training is provided. For qualified candidates, housing is available. Call Tami Edwards at 406-488-3341 or apply at 1100 Silurian Lane.

DENTAL HYGIENIST

Looking for a motivated hygienist to join our team. State of the art, comprehensive, general, and cosmetic practice. Call 406-433-7645.

OUTREACH WORKER

Year round, full time outreach worker needed for Farmworker Health Clinic in Fairview, MT. Local area travel crucial, mileage paid, must have MT drivers license, auto insurance and reliable vehicle. Bilingual English/Spanish preferred. Benefits are working with great staff and clients, as well as eligible for paid leave and insurance after 90

days. Contact Montana Migrant Council at 1-800-813-4492 or mmcmt@wtp.net.

REGISTERED NURSE NEEDED

Year round, full time registered nurse needed for Farmworker Health Clinic in Fairview, MT. Bilingual English/Spanish preferred. Benefits are working with great staff and clients, as well as eligible for paid leave and insurance after 90 days. Contact Montana Migrant Council at 1-800-813-4492 or mmcmt@wtp.net.

OFFICE ASSISTANT WANTED

Expanding business looking for an office assistant, full time, 40 hours a week with benefits. Proficient computer knowledge & organizational skills a must, salary BOE. Please mail or drop off resume to: Union Gateway Inc., 202 3rd Ave. N.W., Sidney, MT 59270 by 06/07/13.

RESEARCH ASSISTANT II

Eastern Agricultural Research Center, Sidney, MT. For complete job announcement and ap-

plication procedures, go to: www.montana.edu/jobs. Screening begins May 30, 2013 and will continue until a suitable candidate is chosen. AA/ADA/EEO/Vet pref. employer.

REAL ESTATE

3 BEDROOM HOME FOR SALE

3 bedroom home with attached single garage on corner lot in Culbertson, \$239,000. Call 406-787-6192 or 406-787-7778 for more information.

Xango Mangosteen Juice
The Business of the 21st Century
Call Gloria at 406-480-9777
Sidney, MT
gloriasdiscovery.org

701-844-5300
Ev's Auto Glass
16132 Hwy 200 East
Wahkiakum, WA 98658
Back Glass
Door Glass
Vest Glass
Chip Repair
Big City Price Small Town Quality



Are you an exceptional individual who is ready for success and the opportunity to grow your career in hospitality? **Then we want to get to know you!**

The ALL NEW Microtel Inn & Suites is in search of new and future hospitality professionals who are prepared to provide industry-leading levels of customer service and award-winning overall guest experiences.

No experience? NO PROBLEM! We will train and equip you with the skills and tools you need to succeed.

- Access to top-tier operational support
- Exciting career advancement opportunities
- Competitive wages and benefits.

Full-Time Positions Available...
Housekeeping & Breakfast Attendant



MICROTEL INN & SUITES
BY WYNDHAM
1500 S. CENTRAL AVE, SIDNEY MT 59270
PH. 406-482-9011 FAX. 406-482-9013
EMAIL: INFO@MICROTELSIDNEY.COM

Wahlstrom Black Angus
Alexander, ND 58831

For Sale: Private Treaty
Registered Yearling Black Angus Bulls,
Easy Flething, Thick, Long, Good
Disposition Bulls

Sires are: *Carlson Grid Iron*
Vermillion Dateline
Hyline Right Time
Dyno-Belmoral Eston

Call:
701-572-5179 • 701-572-0221 • 701-828-3051

Help Wanted
Sidney Sugars
Incorporated has the following position open:

- **Boiler Operator:** Class 1 or 2 licence \$26.18. Class 3 \$21.95 hr with willingness to learn. Requires Montana or transferable Boiler Operator License.

Full Time benefits are:

- Holiday, Vacation and sick pay
- Insurance for medical, dental and life
- Pension and 401 (k)

Apply in person or request an application from:
Sidney Sugars Incorporated
35140 County Road 125 - Sidney, MT - 406-433-9320
Apply at **Job Service Work Force Center**
211 N Central Ave - Sidney, MT
www.sidneysugars.com



Sidney Sugars
INCORPORATED
Walk-ins are welcome!
Equal Opportunity Employer
Drug Free Workplace

NOW HIRING

Workover Rig Mechanic
Watford City ND



Career Responsibilities

- Disassemble machinery or equipment to remove parts and make repairs.
- Examine parts for defects, such as breakage or excessive wear.
- Repair or replace broken or malfunctioning components of machinery or equipment.
- Clean, lubricate, or adjust parts, equipment, or machinery.
- Repair or maintain the operating condition of pumps, pump engines and equipment.

Required Skills

- Preferred 2-3 years of experience of maintenance on workover rig experience.
- Ability to operate/function in adverse weather conditions all year around.
- Knowledgeable of Detroit, Caterpillar and/or Cummins diagnostic equipment.
- Proper documentation of maintenance and repairs completed on a daily basis.
- DOT Certifications – performing the DOT inspection.
- Repairing - Repairing machines or systems using the needed tools.
- Equipment maintenance – performing routine maintenance on equipment; has required by DOT and company.
- Troubleshooting | Operation Monitoring | Quality Control Analysis

Required Licenses or Certifications

- DOT Certifications preferred.
- Certified welder preferred.
- Detroit, Caterpillar and/or Cummins training preferred.

For more information:
Apply online visit:
www.mbienergyservices.com
Or call 701-842-2823 for questions.

At Sidney Health Center, we promote a Work-Life Balance...

Sidney Health Center's most valuable resource is the people who serve our patients, residents and guests.

9 Out of 10 Employees Agree:
"I don't have to choose between my job and family!"

Join our team!

EMPLOYMENT OPPORTUNITIES

- Certified Nurses Assistant ECF
Classes Available In June
- Coding Specialist I
- Lodge
Cook
Environmental Services
Resident Assistant
- Nursing
LPN or RN - Acute or Clinic Office
RN - OB
- Environmental Services
- Staff Pharmacist

TOP 100



SIDNEY HEALTH CENTER
Exceptional Care for Life

For additional information or to apply online, please visit our website or contact:
Marilyn Olson - Phone: (406) 488-2571
mjolson@sidneyhealth.org
216 14th Ave SW - Sidney, MT

Visit Our Website at: www.sidneyhealth.org

Roosevelt Medical Center has immediate openings for Long Term Care Residents.

Our highly qualified Medical staff looks forward to seeing to your medical needs and giving you the best possible care. The Activities staff plans a wide variety of events to maintain your interest and keep you active. The Housekeeping staff will cheerfully clean your room and do your laundry. Our Dietary staff provides wholesome, nutritious meals and snacks for you.

Come join us and become a part of our family.

For more information, contact Brenda Harvey at 406-787-6401

GREAT INVESTMENT PROPERTY FOR SALE IN SIDNEY

Remodeled interior, new windows, arch coved ceilings, new 200 amp. electrical service throughout, tiled bathroom, new aspen wood laminate flooring throughout main living area. New sewer and water lines hooked up to city service as part of remodel. 2 bedroom, 1 bath, laundry room in main area, 1,200 sq. ft., 6 ft. wood fence around 75% of lot perimeter, new 432 sq. ft. addition added Aug. 2012 in framed stage with high vaulted ceilings, laid out to add second bathroom and 2 other rooms,

buyers choice. Potential for 2 separate units each with private entry, alley access, plenty of off street parking. Call 541-401-8075 for more details.

TRAILER HOUSE FOR SALE

14x70, 1974 trailer house, needs to be hauled off. \$5,000 OBO. Call 406-488-6183.

LAND FOR SALE

Commercial and residential land available, two miles north of Arnegard, ND. Excellent location for travel to Watford City and Williston. 701-842-2168 or 701-570-8108.

FOR RENT OFFICE/RETAIL SPACE FOR RENT

Office/Retail space for rent in downtown Sidney. Reasonable. Call 406-489-1945.

FOR RENT

Camper spot in Savage, all hook-ups included, \$700/mo. Call 406-776-2209 or 406-480-1626.

FOR RENT

Stick built house west of Arnegard. 3 bdrm., 2 baths, living room, dining room, kitchen, very nice; also, 2011 manufactured homes set up with water, sewer, electric, natural gas, phone, internet, cable & garbage, 16x80 homes with 3 bdrms., 2 baths, 1,280 sq. feet, good size yards, nice area and community for families, family workforce housing or company housing, homes completely furnished, including beds, furniture, appliances, utensils, etc. Located in Arnegard, easy access. Call 701-400-6075 or 701-730-5469.

SERVICES

WELDING

Welding & repair work. No job is too small. Portable welder, reasonable rates. 701-444-2936.

For Sale

FRANZ RANCH
Yearling Red Angus and Charolais Bulls

406-798-3675

Kilen Backhoe Service

- Sewers • Basements
- Water Pipelines

Marvin (406) 798-3601

Marlon (406) 489-1243

Kenny (406) 489-1426

PAINTING

Will paint houses, barns, quonsets, silos, grain bins, etc. References available. R&L Painting, 406-488-8244.

COMPLETE SERVICE CENTER

The Roundup provides free Fax service at Meuchel Computer Services, Watford City, ND, for all news, photos & advertising copy. You may drop your Roundup payments at Meuchels.

WINDSHIELD REPLACEMENTS

Lowest price around. Quick service. Over 300 windshields in stock for cars, pickups & semis, reflect windshields are now \$120. Magrum Motors, 1820 2nd St. W., Williston. 701-572-0114.

CONSTRUCTION/ BUILDING

Innovative Builders, new homes, additions, remodels; all phases of construction. Professional, courteous, quality; serving the MonDak region since 1976. Call 541-401-8075.

FARM & RANCH MINERALS & SUPPLEMENTS

Complete line of minerals & supplements. Protein & mineral tabs for cattle, horses & sheep. All types of liquid feed for livestock. Calving supplies. R&J Ag Supply 406-488-1953, 406-480-2006, 1-800-233-2499, Sidney, MT.

VERMEER HAYING EQUIPMENT

See us today for all your haying & feeding equipment, sweeps & farm oil. Anderson Vermeer Sales & Service. Open Mon.-Fri., 8

a.m.-5:30 p.m. 701-828-3358 or 701-828-3482 (after hrs.). Alexander, ND.

FOR SALE

Older MIH Tractor with F-11 loader with snow scoop, \$1,500. Call 406-478-4564.

FOR SALE BY SEALED BID

Lincoln Electric Cooperative of Eureka, MT has for sale by sealed bid: 1992 CAT-Caterpillar, 416 Series II, 4x4 backhoe with 3,700 hrs.; 1997 Ford F-800 Flatbed, 10 speed transmission, air brakes, 44,565 miles, DOT inspection passed 5-12-13; 2000 Norwest Tilt Trailer, 24K GVW, air brakes, DOT inspection passed 5-12-13. These may be viewed at the cooperative headquarters at 500 Osloski Road and will be sold as is. Please call 406-889-3301 to request pictures by email (8 a.m.-4:30 p.m.). Sealed bids may be handed in at the office or mailed to LEC, Attn: Sealed Bid, P.O. Box 628, Eureka, MT 59917. Bids must be received no later than 4:30 p.m., June 21, 2013. LEC reserves the right to reject any and all bids.

MISCELLANEOUS FOR SALE

FIRE RESISTANT
Fire resistant clothing available at The Other Place, Culbertson, MT. Now 30% off. 406-787-5211.

FIRE RESISTANT CLOTHING \$20 AND UP, WATFORD CITY AREA

Used pants and shirts starting at \$20 each. Waist sizes 30-40, shirt sizes up to 4X. New clothing available, supply constantly changes, so text with needs, calls welcome after 6 p.m., 864-414-3432.

SHEDS FOR SALE

\$3,000, 10x16, wood frame, metal outside, choice of door, on skids, will deliver or build on-site. Call 406-274-2512.

FOR SALE

Complete Picture Framing Shop to be moved, heavy duty CTD Chopper, Fletcher 2100 mat cutter, Fletcher 3000 wall mount glass and mat cutter, shrink wrap machine, 300 plus mat boards, several 100 ft. of misc molding, 1,000 corner mat samples, 1,000 corner sample molding, misc. hand tools, supplies and prints. Call 406-796-2326.

Bakken Mobile Veterinary Service
Dr. Vince Stenson
Complete small animal care
8 am - 4 pm
Sidney:
Wednesday June 12
Yellowstone Valley Greenhouse
Culbertson:
Wednesday, June 5 & 19
County Ext. Bldg on Main Street
Call for Appointment
(701) - 570 - 5510

Mini-Storage
STORAGE UNITS AVAILABLE
20X20 • 10X20
10X16 • 8X9
Sidney, MT
482-3799 or 482-2666

The Roundup Auto Trader

Only \$17 A Week!

If you run it for 2 weeks & it doesn't sell, we'll run it for 2 more weeks..... **FREE!**

2007 Yamaha TTR50

In excellent condition Call (406)-489-0877



\$850
or best offer

Lund 16 Ft Side Console Boat

50 H.P. Yamaha oil inj motor w/power trim, 2 bank charger, fish finder, easy loader trailer.



Call 406-489-4279

\$2,900

Want to place an ad in the auto trader?

Email: classads@esidney.com • Call: (406) 433-3306 for details

B&S STORAGE UNITS AUCTION

SATURDAY, JUNE 1st, 2013 • 1:00MST
12760 Hwy. 200 or 3 Miles North of Sidney or 7 Miles South of Fairview, MT
Watch for Signs

We will be selling 5 delinquent storage units by the unit. You will be purchasing all the stored merchandise within each delinquent storage unit.

You will have two (2) days to clean unit out or possibility of renting the unit until the end of June upon B&S Storage Units management approval.

For further information call 406-433-2626.

LINDSEY AUCTION SERVICE
TERMS: CASH OR GOOD NEGOTIABLE CHECK • EVERYTHING SOLD AS IS, WHERE IS • ALL INFORMATION IN THIS ADVERTISEMENT IS DERIVED FROM SOURCES BELIEVED TO BE CORRECT - BUT IS NO WAY GUARANTEED.

GENE LINDSEY Lic. #559 572-5152 • 570-6034
GL CLERKING Lic. #639
NOT RESPONSIBLE FOR ACCIDENTS

SY Soren New! AgriPro's Highest Return Per Acre
Kelby High Protein and Complete Amino Acids
Jenna The Yields with Protein
Reeder Good Yields and Protein Under Wide Ranging Conditions
SY Tyra New! AgriPro's Slightly Tolerant Variety
Brennan Balanced With High Yield and Protein
SY605 CL High Yield CLEARFIELD® Spring Wheat
Trapeze Yellow Pea

Call For Varieties Not Listed

SKOV SEED New High Yielding Variety with Good Height and Standability
Randy Skov | Fairview, MT
406-747-5217 Home | 406-489-0165 Cell
Call Today!
AgriPro

S&S Motors
See the CLEARANCE tag specials!

- 2009 GMC Yukon XL Denali, red, 31k mi.....\$44,995
- 2012 Chevy Suburban LT, black, dvd, 28k mi....\$39,995
- 2012 Jeep Grand Cherokee Limited, gray, dvd, nav, 26k mi\$37,995
- 2012 Ford Explorer Limited, silver, sunroof, 32k mi.....\$34,995*
- 2012 GMC Acadia SLT, silver, 16k mi\$34,995
- 2011 Ford F250 XLT, silver, 39k mi.....\$32,995
- 2013 Ford Edge Limited, earth metallic, 23k mi..\$32,995
- 2010 Jeep Wrangler Rubicon, black, nav, 28k mi..\$32,995
- 2011 Ford F250 XLT, white, 47k mi.....\$31,995
- 2011 Ford Edge Limited, black, 31k mi.....\$29,995
- 2010 Chevy Silverado 1500 LTZ, red, 48k mi..\$29,995
- 2011 Jeep Grand Cherokee Laredo, gold 48k mi..\$25,995
- 2010 GMC Sierra 1500, silver, 35k mi.....\$24,995
- 2011 Ford Escape Limited, red, 47k mi.....\$21,995
- 2008 Honda Ridgeline, black, 87k mi.....\$20,995
- 2006 Ford F150 Lariat, white, 76k mi.....\$19,995
- 2011 Ford Escape XLT, white, 51k mi.....\$18,995
- 2006 Ford Mustang, red, 67k mi.....\$14,995
- 2006 Chevy Impala LTZ, white, 57k mi.....\$12,995
- 2008 Ford Taurus X SEL, silver, 89k mi.....\$11,995
- 2006 Buick Lucerne CXL, white, 73k mi.....\$11,995
- 2002 Ford F250 XLT, red, diesel, 174k mi.....\$11,995
- 2000 Ford F350 XLT, Silver, Diesel, Manual, 225k mi..\$10,995
- 2006 Pontiac Torrent, white, 96k mi.....\$9,995
- 2005 Hyundai SantaFe, maroon, 64k mi.....\$8,995
- 2006 Dodge Grand Caravan SE, green, 45k mi...\$8,995
- 2005 Pontiac G6, black, 85k mi.....\$8,995
- 2005 Ford Taurus SE, blue, 81k mi.....\$6,995

www.sandsmotorsinc.com
444-2341 or Toll Free - 800-584-9205 • Watford City, ND

MOVING SALE

42" TV w/ DVD surround system & stand, \$600; 55 gal. aquarium, complete w/ fish, \$200; couch, recliner, pictures, odds & ends, miscellaneous items. Call 406-488-9710, if interested.

WANTED

WANTED TO BUY

Scrap iron, scrap metal, batteries, junk vehicles, Call 406-488-1829 or 406-480-4213.

VEHICLES

2000 RIGHT HAND DRIVE POSTAL JEEP FOR SALE

Retired, 165,000 miles, recent work, 4WD, mail tray. Call 406-488-5837.

RECREATIONAL VEHICLES

MOTORHOME FOR SALE

1983 Pace Arrow, 33 1/2 ft., 2 airconditioners, sleeps 5, central vacuuming, some amenities included, \$4,800. Call 406-488-5837.

FIFTH-WHEEL TRAILER FOR SALE

Must be moved. 36', 2000 Prowler, includes skirting, porch, fencing, etc; has extras galore with 3-XL slideouts, wood cabinets/floors, washer/dryer hook-ups, gas heat, a/c, generator and solar panel so you are ready for anything, \$14,000. Call 541-280-9869.

1984 LUND 5.5TYEE BOAT FOR SALE

Comes with Shorelander trailer, 115 HP Merc. plus 9.9 Mercury, has topper, \$4,500. Call 406-488-5837.

RETIRED COUPLE SELLING 2010 LAREDO FIFTH-WHEEL

Large slide-out, Glacier package, many upgrades, 1/2 ton & towable, asking \$19,500. Call 701-570-0669 for appointments to see.

RENDEZVOUS READY

Small enclosed trailer, 10x10, Panther Primitive tent, tanned buffalo hide, CVA percussion 50 caliber rifle, all camping supplies included, \$1,000. Call 701-570-0669.

MOTORCYCLES

2002 HONDA GOLDWING M/C

Fully loaded, cruise, anti-lock brakes, new tires, 14,000 miles. First with \$9,500 cash takes it. Call 541-401-8075.

GARAGE SALES

RICHEY BOOSTER CLUB COMMUNITY GARAGE SALE

Starting Saturday, June 8 at 8 a.m. If anyone from out of town is interested in having a garage sale, locations will be available to set up. Fee is \$5 per location or garage sale. Maps will be available at the 4-car school garage on Main Street, southwest of the playground. All sale locations will be marked with a sign and balloons. The Class of 2014 & 2018 will also be having a car wash and bake sale at the Stockman Bank. For more information or to add your name to the garage sale list, please contact Lissa (406-773-5346), Jana (406-773-5858) or Janet (406-583-7577).

GIVE AWAY

GIVE AWAY

Piano, organ, stove and fridge. Call 701-842-2556 or 701-842-3259.

MURPHY MOTORS WISHES YOU AND YOUR FAMILY A HAPPY AND SAFE MEMORIAL DAY!

MURPHY MOTORS WILL BE CLOSED ON MEMORIAL DAY

2012 DODGE AVENGER SEDAN

Auto/AC TILT SC AM/FM/CD, grey metallic/ebony cloth. 14,374 miles. U5178A.



\$16,995

2012 NISSAN ALTIMA

2.5 SL-4 cyl, ATOD, A/C PW, PL, TILT, SC, AM/FM/CD, silver/ebony cloth. 31,594 miles. U5404A.



\$16,495

2012 CHEVROLET MALIBU LTZ

PW, PL, TILT, SC, 4cyl ATOD, A/C, P. Sunroof, leather, ALWL. 13,962 miles. U5409A.



\$19,295

2013 SUBARU LEGACY SEDAN AWD

PW, PL, TILT, SC, Auto A/C, Alwheels, blue metallic/ebony cloth. 11,439 miles. U5414A.



\$23,995

2012 DODGE GRAND CARAVAN

V6 Atod, PW, PL, TILT, SC, AM/FM/CD, Stow N Go. White/ebony cloth. 33,976 miles. U5411A.



\$19,995

2011 JEEP PATRIOT AWD

4CYL, Atod, PW, PL, TILT, SC, A/C, All whl. Silver/ebony cloth. 33,077 miles. U5440A.



\$17,499

2009 CADILLAC ESCALADE ESV

6.2 V8 ATOD, Pw, PL, TILT, SC, AM/FM/XM/CD, NAV, DVD, P.sunroof, 22" chrome wheels, diamond white/linen leather. 95,246 miles. C4934A.



\$29,995

2011 CHEVROLET SUBURBAN LTZ

5.3 V8 ATOD, Pw, PL, TILT, SC, AM/FM/XM/CD, NAV, P.Sunroof, DVD, 20" Chrome Wheels. Black/ebony leather. 40,288 miles. C4669A.



\$44,995

2008 GMC YUKON DENALI 2WD

6.2L V8 ATOD, PW, PL, TILT, SC, Pseats, htd seats, p.sunroof, DVD, 20" chrome wheels, white/leather interior. 64,637 miles. C5224A.



\$28,995

2008 JEEP UNLIMITED 4DOOR

V6 ATOD, A/C, 4x4, Nerfs hard top, blue/ebony cloth. 98,136 miles. G52902.



\$19,995

2008 GMC ACADIA FWD

3.6 V6, ATOD, Pw, PL, TILT, SC, AM/FM/XM/CD, SLT, Htd seats, Pseats, al wheels, white/ebony leather. 67,810 miles. C5386A.



\$20,995

2009 GMC 2500 CREW CAB SLE

6.0 V8 ATOD, Pw, PL, TILT, SC, AM/FM/XM/CD, A/C, Pseat, Al wheels, 6" GM Assist Steps, grey/ebony cloth. 52,298 miles. C5443A.



\$25,995

2010 GMC SIERRA SLE ALL TERRAIN

5.3 V8 6-speed auto, Pw, PL, TILT, SC, AM/FM/XM/CD, ext cab, chrome wheels, nerfs, spray liner, tcover, astrostart, ebony/ebony. 30,838 miles. G4934A.



\$28,995

2011 FORD RANGER EXT CAB 4x4

Pw, PL, TILT, SC, AM/FM/CD, 4.0 V6, ATOD, A/C, red/ebony cloth, all wheels. 22,734 miles. C4484A.



\$19,995

2012 GMC 2500 CREW LONG BOX

6.0 V8 auto, A/C, PW, PL, TILT, nerfs, sc, AM/FM/CM/CD, 4x4, al wheel, 5th wheel hitch white/ebony cloth. Only 400 miles. C4871B.



\$38,995

2011 CHEVY 2500 CREW LONG BOX

6.6 Duramax DSL Allison ATD 6-speed, PW, PL, TILT, SC, AM/FM/XM/CD, nerfs, spray liner LTZ, silver/ebony leather. 29,495 miles. G4998A.



\$44,995

2006 DODGE 2500 DSL

Crew cab, Sbox, PW, PL, TILT, SC, AM/FM/CD, grill guard, tcover spray liner, grey/grey leather. 100,671 miles. G54291.



\$26,995

2008 CADILLAC EXT

6.2 V8 ATOD, PW, PL, TILT, SC, AM/FM/XM/CD, NAV, DVD, P. Sunroof, New tires, 22" Chrome wheels. Ebony/ebony leather. 79,643 miles. K4272A.



\$28,995

Credit Concerns? Apply online at www.NDcreditDR.com



Murphy MOTORS



SEE THESE SALES CONSULTANTS FOR QUALITY CAR BUYS!



1801 2nd Ave. W. Williston, ND Call
1-800-888-2927 or 701-577-2927
Hours: Mon. 8am-8pm ; Tues.-Fri.
8am-6pm; Sat. 9am-5pm



www.murphymotors.com



Kiwanis Scholarship Winners

Sidney Kiwanis Club president Leif Anderson presented \$500 checks to each of the four Kiwanis scholarship winners last Thursday. The deserving winners are, L to R, Heather McDonald, Jesse Staffanson, Olivia Hintz and Alec Johnson. All four have been active in Key Club as well as maintaining excellent grades during high school, and all will attend college this fall.



Year End Banquet

The Sidney Wrestling Club held its year end banquet on Tuesday, May 21st. Pictured are the award winners for this wrestling season:

Front Row: Jordan Darby - Eagle Spirit Award, Aden Graves - Midget Outstanding Wrestler, Brodie Gorder - Midget Hardest Worker, Gavin Skoy - Tot Hardest Worker, Brandon Becker - Tot Most Improved, Dillon Skoy - Bantam Most Improved, and Tanner Becker - Bantan Hardest Worker. Second Row: Jace Winters - Schoolboy Outstanding Wrestler, Riley Waters - Novice Outstanding Wrestler, Everett Jensen - Novice Hardest Worker, Waylon VanBuren - Schoolboy Future Standout, Jett Jones - Novice Most Improved, Brodey Skogen - Novice Hardest Worker, and Jed Escobedo - Novice Future Standout. Back Row: Wyatt VanBuren - Cadet Future Standout, Ethan Graves - Cadet Hardest Worker, Dace Fisher - Elite Outstanding Wrestler, Gresh Jones - Elite Outstanding Wrestler, Cody Christian - Cadet Outstanding Wrestler, Trace Jones - Cadet Most Improved, and Brady Gorder - Cadet Future Standout. Not pictured: Jaiden Gustafson - Tot Outstanding Wrestler, Ty Schepens - Tot Future Standout, Zander Dean - Bantam Outstanding Wrestler, Kendell Young - Bantam Future Standout, Kadin LeFors - Midget Most Improved, Grady Nelson - Midget Future Standout, Josh Aisenbrey - Schoolboy Hardest Worker, Avery Gurney - Schoolboy Most Improved, Garrett Darby - Elite Future Standout, Braydn Rooks - Elite Hardest Worker, Douglas Rooney - Elite Most Improved, Jordan Stevens - Elite Outstanding Wrestler. (Submitted by Erin Graves)



BPA National Leadership Conference

Twenty-seven Sidney High School Business Professionals of America students and five chaperones and advisors attended the BPA National Leadership Conference in Orlando, Florida, May 6-12, along with over 5,000 members from around the nation. While there, members were honored for achieving the National Ambassador Award. They also attended sessions and meetings and participated in a variety of competitive events. In addition, our members participated in a fund-raising walk to benefit Special Olympics, our national philanthropic project. Sidney's Nicole Moore represented Montana as a candidate for a national office, and Montana State BPA President Tori Hill from Sidney presented Montana's flag at the opening session and served as Montana's head voting delegate. Krista Steinbeisser was awarded a National BPA/NTHC \$1,000 scholarship, Tresha Sanders placed eighth out of over 450 competitors in the Administrative Support Concepts event, and Tori Hill placed ninth in the BPA Merit Scholar Event. Sidney members were also able to experience many sites that Orlando has to offer, including Walt Disney World, a water park, Universal Studios, Cirque du Soleil, and Daytona Beach. Sidney's BPA would like to take this opportunity to thank the many businesses and individuals who helped make this trip a highlight of the 2012-13 school year. (Submitted by Elaine Stedman)

Right: Tresha Sanders wears the medal she earned for placing eighth out of over 450 competitors in the Administrative Support Concepts event at BPA Nationals.




SUCCESS

EXCEPTIONAL TALENT
STRATEGIC ASSETS...
A WINNING INVESTMENT.

QEP Resources is a leading independent natural gas and oil exploration and production company with operations in the Rocky Mountain and Midcontinent regions of the United States.

A Proud Past—A Bright Future NYSE: QEP www.qepres.com



QEP Resources, Inc.

