

2013 RICHLAND COUNTY FAIR BOOTH



We Are Overstocked!

Take up to \$12,500 off NEW GMC & Chevy Trucks*
Come in during the fair & cool off with a HOT DEAL!



GMC
WE ARE PROFESSIONAL GRADE



The New Class of World Class



*See dealer for details

www.gemcitymotors.com

Gem City
MOTORS

703 S. Central, Sidney • 406-433-3120

Eagle Country



**Visit Us &
THE FORD STREET TEAM
TRAVELING DISPLAY
At The Fair!**

215 EAST MAIN, SIDNEY, MT • 433-1810 OR 1-800-482-1810

FEATURING THE 2013 FORD RAPTOR



**Dine in Air Conditioned Comfort...
Then Enjoy the Fair**

**Fair Specials:
Hearty Man Breakfasts
Mexican Lunches
Through Saturday**



Sunny's

Family Restaurant
"It's Always Sunny at Sunny's!"

**Now Open for
Breakfast & Lunch**
Sunday: 6am - 2pm
Monday: 5am - 3pm

102 E. Main • Sidney • 406-433-1839

IN-THE-FIELD
FARM TIRE
SERVICE



We're ready to serve you!

WESTERN TIRE CO.

1601 SOUTH CENTRAL • SIDNEY, MONTANA
433-3858 • Open 7-5:30 M-F & 7-Noon Sat.

CERTIFIED DEALER



FARM TIRES
THE DECKS TO THE TIRE

Welcome To The Richland County Fair & Rodeo!

The Showcase Window of Agriculture Achievement in Eastern Montana and Western North Dakota

Make sure to attend the 2013 Richland County Fair & Rodeo, July 31-August 3. There is so much to see and do during these four fun-filled days!

Entertainment throughout the day includes the many commercial, agriculture, school and 4-H exhibits, food booths, antique tractor show and carnival by North Star Amusements. You won't want to miss all the daily free act entertainment. Remember to purchase your tickets for the PRCA Rodeos held Thursday, August 1 and Friday, August 2 at 7:30 p.m. presented by Brookman Rodeo, LLC. Thursday night's rodeo performance is "Military Appreciation Night" and Friday night's rodeo performance is "Tough Enough to Wear Pink Night". \$3 will be donated by our sponsors for every person wearing pink, and all proceeds will benefit the Richland County Health Department Cancer Coalition. This year's concert line-up includes country music performers, Montgomery Gentry with special guest Gloriana, and promises an excellent show Saturday, August 3 at 7:30 p.m.

We would also like to thank all of the MonDak area residents, businesses and the sponsors for continued support. You make the fair possible! Make sure to join us July 31-August 3 at the 2013 Richland County Fair & Rodeo! "Richland County Fair, Spirit & Pride County Wide".

*Sincerely,
Jamie Larson
Manager, RCJ&R*

ENJOY THE RICHLAND COUNTY FAIR & RODEO

Good luck to all the exhibitors and 4-Hers



Sidney Sugars

INCORPORATED



4-H Events Kick Off Tuesday, July 30th at the Richland County Fair

By Tie Shank

Have you ever wondered what 4-H stands for?

The name represents four personal development areas of focus: head, heart, hands, and health.

Through hands on experience and by practicing the 4-H slogan, "Learning by doing," 4-Hers learn skills that'll remain with them throughout their lives: decision making skills, leadership skills, interpersonal relationships, community concern and responsibility.

For most 4-H families the annual county fair is the highlight of the summer. It's the opportunity for 4-Hers to show off what they've worked so hard on throughout the past year. It's a time when families come together to support one another and their community.

This year's event promises to be an exciting time for participants and spectators alike.

4-H Calendar of Events Tuesday, July 30, 2013

9:00 a.m. – 1:00 p.m. – Indoor Interview Exhibit Judging
12:00 – Deadline for all 4-H Horse Entries
3:00 p.m. – Ranch Horse, Trail, Driving (mini & standard), Speed Event Sidney Saddle Club Arena

Wednesday, July 31, 2013

8:30 a.m. – Judging of 4-H Horse Classes and Showmanship
11:30 a.m. – 4-H Food Booth Opens
12:00-3:00 p.m. – Entry of Hogs, Sheep, & Goats
3:00 – 6:00 p.m. –Entry of Beef & Dairy. Weighing of Market Beef
4:00 p.m. – Judging of Poultry
6:00 p.m. – Judging of Dogs, Cats, & Rabbits
7:00 – 8:00 p.m. – Weighing of Market Goat, Hog, & Sheep

Thursday, August 1, 2013

8:30 a.m. – 4-H Livestock Judging (swine, sheep, dairy, & goat)

5:00 p.m. – 4-H Market Beef Judging

Friday, August 2, 2013

8:00 a.m. – 4-H Showmanship (Sr. & Jr.)
11:00 a.m. – Overall Grand Champion Showmanship Contest (Sr. & Jr.)
4:00 p.m. – Trophy & Awards presentation
5:00 p.m. – 4-H Livestock Sale

Saturday, August 3, 2013

10:00 a.m. – Member & Alumni Obstacle Course

6:00 p.m. – Check out of 4-H Horse Exhibits

Sunday, August 4, 2013

7:00 a.m. – 10:00 a.m. Check out of all 4-H Exhibits, including Livestock

In addition to the above lineup, Livestock Chairman Keith Dynneson will be chairing a fundraiser for the Kelby Indergard Memorial Scholarship fund.

Kelby was born in May of 1995 to Kelly & Stacey (Letcher)

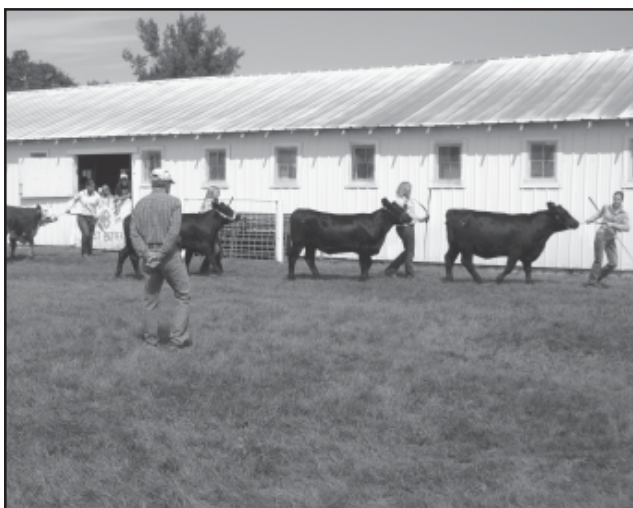
Indergard, and was raised on their family ranch in McKenzie Co., ND. He was sadly and unexpectedly taken from them on January 12, 2013. Kelby was an active member of the Badlands Brushpoppers 4-H club and a standout in the state of ND in both academics and in the rodeo arena.

If you'd like information on donating to the Kelby Indergard Memorial Scholarship fund or on the fundraising events being held during the 4-H fair, contact Keith Dynneson at (406) 798-3661

For information on 4-H or 4-H events, please contact Administrative Assistant Patti Fjelstad at (406) 433-1206



4-H Livestock members



Market beef judging



Vet. JJ Hovde ultrasounds market beef

Annual Summer Sale!

25%-50% off
Summer Fashions

15% off
Western
Boots

Come pick up your
"Tough Enough"
gear for the rodeo
Friday, Aug. 2

TOUGH ENOUGH
TO WEAR
PINK?
Sponsored by WRANGLERS

Creekside Clothiers

1555 S. Central • (across from McDonalds) • Sidney
406-433-3025

We Have All Your Fair Reunion & Picnic Supplies!

WHOLESALE PRICES!

East-Mont Enterprises Inc.

Pop • Chips • Water • Nacho Cheese
Coffee • Salsa • Candy • Plates
Napkins • Cups • Cutlery



Popcorn Popper
& Cotton Candy
Machine for Rent
Sno-Kone Machine

608 E. Main | Sidney, MT | 406-433-2910
Locally Owned | Special Orders Welcome

Nutt-N Better Ice Cream Shop

Closed Wed-Sat for the Fair



Novelties • Indoor
& Outdoor Seating

Blue Bunny Hard Ice Cream

212 2nd St SE | Sidney, MT | 406-433-4232
Come See Us Sunday, August 4th

Enjoy The Richland County Fair & Rodeo

One Store...Two Locations

Home Design Center

111 S. Central Ave.
433-1402

- Furniture
- Appliances
- Housewares
- Toys

Hardware Center

114 W. Nain
488-1909

- Hardware
- Sporting Goods
- Firearms Do it Best
- Lawn & Garden

Stop By & Shop In Cool Comfort!

JOHNSON
HARDWARE & FURNITURE
— since 1915 —

"Proudly serving our 98th year"

Hours: Mon.-Fri. 8 a.m.-5:30 p.m. • Sat. 8 a.m.-5 p.m.

www.johnsonhardwareandfurniture.com

Free Daily Entertainment At This Year's Fair



Caricatures by Connie Brooks



There will be plenty of exciting entertainment for all ages at this year's Richland County Fair.

CampJunction Exotic Petting Zoo & LemurLand of Madagascar

This professional, experienced exotic petting zoo featuring LemurLand of Madagascar and Zoofari Adventures EdZOOcational Programs will provide great entertainment for fairgoers. From an aardvark to a zebra you will find the exhibit for you.

Caricatures by Connie

Join Connie Brooks from 1 p.m.-9 p.m. in the Old Commercial Building for great gifts and entertainment! Former Disney artists who are professionally trained will be available to draw faces with your favorite sport or hobby.

Super Science/The Original Fun With Physics

Come join the Super Science Company in the Old Commercial Building with partners, Tammie Ryan and Patrick Wood from 1 p.m.-9 p.m. This experienced, knowledgeable duo will build and feature exhibits and all day attractions for families with the use of "sneaky learning" while having fun!

The Open Range Band

"Music that captures the spirit of the west" is how people have often described Open Range. Ric Steinke and Linda Hausler, of the Shields River Valley near Livingston, MT, will perform on the Free Act Stage. Treat your ears to a variety of old western style music, swing tunes of the 40s and even tunes from today along with their original compositions. Inspired by Montana's wide open landscape, this duo will provide a great musical blend to fairgoers of all ages.



The Open Range Band



CampJunction Exotic Petting Zoo

Enjoy the Richland County Fair & Rodeo...
then stop by for the best buys on all your grocery needs.
Red Box Video, Music & Game Rentals • Propane Exchange

Be foxy... shop
Reynolds
MARKET

Moving to our _____
New Location
_____ This Fall!

1151 S. Central • Sidney MT | 6am - 10pm Daily
Grocery: 433-2305 • Meat Dept: 433-1902 • Produce: 433-5181
reynoldsmarket.com

ENJOY THE FAIR & RODEO!

FRONTIER
Heating • Refrigeration • Air Conditioning
SIDNEY, MT
488-4657

Welcome to the
Richland County
Fair & Rodeo

Sidney
RED-E-MIX
www.sidneyredemix.com (406)433-1572

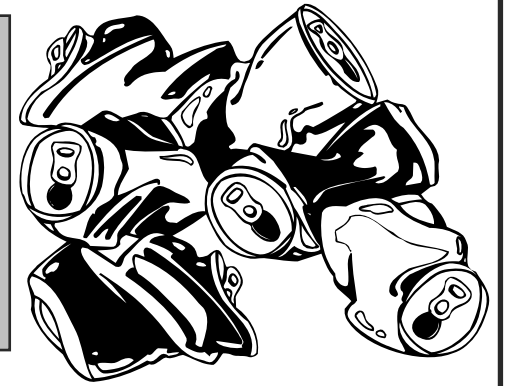


Parking Paved

No more mud, no more holes! Crews finish up paving and striping the parking area of the Richland County Fairgrounds by the Event Center. The project will be completely finished by fair time.

Fair Deal!

Aluminum Cans
45¢ lb.
 July 31 - August 2



PACIFIC
 STEEL & RECYCLING™

350 CR 123, Sidney
 406-482-1301
 or 1-800-548-6364
 Montana & North Dakota
 Mon-Fri: 8am - 5pm

Let's thrive:  **Thrivent Financial for Lutherans®**

You want to keep the MonDak Area great. So do we.



The brightest futures are built together. That's why Thrivent Financial for Lutherans is working with the Richland County Fair & Rodeo for a strong, vibrant MonDak Agricultural Showcase. We're pleased to be part of the Richland County Fair & Rodeo. And like you, we're proud of our commitment to this community.



Harvey Senn
 LUTCF, FIC
 Financial Associate



Ronald Gebhardt
 FIC
 Financial Associate



1050 S Central Ave • Sidney, MT 59270
 Toll-free 877-433-6143

For important disclosure information, please visit Thrivent.com/disclosures.
 Appleton, Wisconsin • Minneapolis, Minnesota • Thrivent.com • 800-THRIVENT (800-847-4836)

24653 R5-13

Thrivent.com
 652609



Tired of Spinning Your Wheels?

Come See Us!



Brad Franklin



Eleanor Franklin



Rowdy Cvancara

Introducing Our New Loan Officers:



Monica Waters



Billie Taylor



1st Bank

433-BANK | Sidney • Broadus
www.our1stbank.com



Dedicated to keeping your family healthy.

Take Time to Check Your Health

There are generally no symptoms of high blood pressure, so you usually don't feel it. In fact, nearly one-third of people who have hypertension don't know it. The only way to find out if you have high blood pressure is to get your blood pressure checked on a regular basis.

FREE Blood Pressure & Blood Sugar Checks in the Ag Building

- All 4 Days of the Richland County Fair -
 12:00 p.m. - 8:00 p.m.



Exceptional Care for Life

216 14th Ave SW • Sidney, MT
 Phone: (406) 488-2100
www.sidneyhealth.org

The area's 1st Choice for CERTIFIED COLLISION REPAIR CENTER

- Ecofriendly Waterborne Paint
- Complete Auto/Truck Repair & Refinishing
- Paintless Dent Repair
- Frame Straightening
- Customizing
- Fiberglass Repairs
- Head Lamp Restoration

1st Choice Collision Center



406-433-2277

615 Cambrian Lane • Sidney, MT



Kari and Kaden Kummer visit one of the horses staying in the "Horse Motel" during the 2012 Richland County Fair.

NAPA AUTO PARTS Come Join Us At NAPA!

Have a Fun & Safe Time at the Fair & Rodeo!



109 2nd Ave NE, Sidney, MT | (406) 433-6430
 Mon-Fri: 7:30am - 5:30pm • Sat: 7:30am - 2pm



The Fairview seed picture displayed at in the Agriculture building at the 2012 fair.

BORDER STEEL & RECYCLING, INC.
 (855) 810 - 2995 (406) 433 - 7737
 "Customer Service is our #1 Priority"

Enjoy All The Fair Has to offer...

- Exhibits • 4-H
- Rodeo • Carnival
- Great Food • Fun!

Brady Smelser • Tim Mulholland • Kelly Moody • Bret Smelser • Ernie Gawryluk

Sidney	Glendive	Williston	Plentywood
35002 CR 123	2703 W. Towne St.	13896 W. Front St.	Hwy 16 East
406-433-7737	1-800-423-5219	1-800-820-5493	406-765-2624
1-855-810-2995			



Fair Savings From S SONDA'S solutions

15% off Storewide!
 July 29 - Aug 3



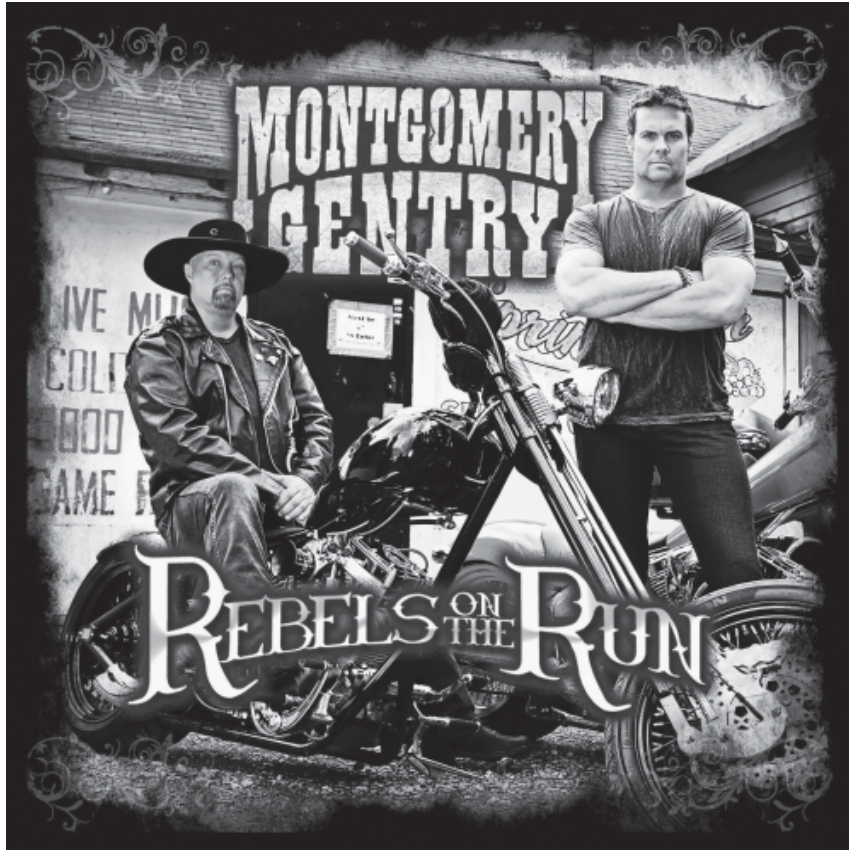
M-F: 6am - 6pm • Sat: 8am - 5pm
 2221 S. Central, Sidney • 406-433-6757
www.sondassolutions.com

Montgomery Gentry to Headline 2013 Richland County Fair

The Richland County Fair welcomes exciting concert line up as well as a new carnival. North Star Amusements out of Cody, Wyoming will be the carnival this year playing all 4 days.

The concert line-up, performing on Saturday, Aug. 3 is MONTGOMERY GENTRY with special guest Gloriana.

With a new album, a new label and a renewed sense of musical purpose, Montgomery Gentry is back in full swing. These two Kentucky boys first broke into the national country scene in 1999. With millions of albums sold, many sold out shows and tons of awards and accolades, Montgomery Gentry is back with their new album "Rebels On The Run". The new album brings you back to the beginning, but with a fresh new attitude. "People are going to be able to touch on each one of our songs and say, 'Yeah man, that song is a little bit about me,' or 'I know a person that lives next door to me that's been through what you just got done singing about,'" Gentry continues. "People can associate themselves with our songs."



Their induction into the Grand Ole Opry in 2009 is the thing that means the most to them. There's no doubt that they're hard-running honky tonkers, but they are also active participants in many charitable organizations, including Stand Up to Cancer, Make-A-Wish, USO and other military organizations.

The old saying "what you see is what you get" applies when you see Montgomery Gentry. Rowdy, fun loving, spontaneous, and awesome talent all describe what these guys are about. Whether you are fan already or not, the music and personalities are so infectious that you will instantly become a fan.

Their opening act will be Gloriana, made up of brothers Tom and Mike Gossin and Rachel Reinert. Achieving success takes strong motivation to commit, something these three young talents have proven willing to do as their career has exploded over the past two years. That motivation, as well as their authentic talent, have propelled the group to become the best-selling debut country act of 2009. Gloriana debuted at No. 2 on the Billboard Country Albums chart and No. 3 on the Top 200 chart and spawned the gold-certified hit single "Wild At Heart." The album's success led to two years on the road, during which the band performed in front of millions worldwide opening for Taylor Swift, Jason Aldean, Alan Jackson, Brooks & Dunn, and the Zac Brown Band.

In 2010, Gloriana won the Academy of Country Music's Award for Top New Vocal Group and were nominated for a Teen Choice Award for "Choice Country Group."

Now Tom, Mike, and Rachel have funneled everything they've learned into their second album, A Thousand Miles Left Behind, released in the Summer of 2012. "On this record, we wanted to tell stories," says Rachel. "I think people will be able to relate to a lot of these songs because they're honest and come from a place that's real." The result is an appealing mix of up-tempo, good-time numbers including current single "(Kissed You)Good Night" and popular "Can't Shake You".



Gloriana will open for Montgomery Gentry at 7:30 PM Saturday night at the Richland County Fair grandstand.

Fair Special!



Bring In Your
Fair Button
July 29-Aug 3
For

10% off

All Blackhawk Clothing
& All Ammunition in Stock



214 S. Central Ave., Sidney, MT
406-433-1800

M - F: 9am - 6pm • Sat: 9am - 4pm

ALL YOUR DEVICES ON ONE SIMPLE PLAN ON THE POWERFUL NETWORK.

Get a Share Everything® Plan and connect your 4G LTE smartphones and mobile hotspots, up to 10 devices, with a single pool of data on the Powerful Network.



Verizon Jetpack®
4G LTE Mobile Hotspot - MiFi™ 5510L

Share 4G LTE speed with up to 10 devices

FREE

\$49.99 2-yr price - \$50.00 mail-in rebate debit card with new 2-yr activation.



DROID RAZR M by MOTOROLA
All Droid does in a compact design

FREE

\$FREE 2-yr price with new 2-yr activation.

SHAREEverything®
Plan

Add a mobile hotspot to your Share Everything Plan

FOR ONLY \$20 monthly line access with a smartphone plan starting at \$90 monthly access.

4G LTE

Verizon 4G LTE. America's Largest 4G LTE Network.



120 East Main
Sidney, MT 59270 • 406-433-4370

101 S. Merrill Ave
Glendive, MT 59330 • 406-377-3645

Our Surcharges (incl. Fed. Univ. Svc of 15.5% of interstate & int'l telecom charges (varies quarterly), 16¢ Regulatory & 90¢ Administrative/line/mo., & others by area) are in addition to monthly access & taxes (details: 1-888-684-1888); gov't taxes & our surcharges could add 6%-42% to your bill. Activation/upgrade fee/line: Up to \$35. IMPORTANT CONSUMER INFORMATION: Subject to Cust. Agmt, Calling Plan & credit approval. Up to \$350 early termination fee/line. Unlimited calling for directly dialed, live calls between individuals. Coverage, varying by svc, not available everywhere; see vzw.com. Limited time offer. Max 10 lines. LTE is a trademark of ETSI. 4G LTE is available in more than 480 markets in the U.S. © 2013 Verizon Wireless. MiFi is a trademark of Novatel Wireless, Inc. 4G LTE is available in more than 500 markets in the U.S. LTE is a trademark of ETSI. DROID is a trademark of Lucasfilm Ltd. and its related companies. Used under license © 2013 Verizon Wireless.

CROSS PETROLEUM

Welcome to the Richland County Fair & Rodeo!



Shell Lubricants 

Keep Your Equipment Going With Shell Products
Call Today For Great Protections For Your Valuable Equipment

Sidney, MT | On The Truck By-Pass
901 3rd St. NE • 406-433-4376

2012 Richland County Fair Highlights

Right: Becca Deming shows off her lamb during the 2012 4-H Livestock sale. Her lamb was purchased by Cenex.

Below: Karley (left) and Sloan (right) McPherson throw baseballs at the Action Entertainment Free Sports Zone at last year's fair.



HAVE A BALL at the Fair

Crop Production Services 

Greg Breuer
Fairview, MT. • 406-742-8800 • 406-489-3429

It's Wrangler Days During The Fair



The Western Original[®]


Boys' & Men's Jeans | Western Shirts
\$5.00 off | 25% off

Sale Starts July 31 & Ends August 3

FARM & HOME SUPPLY

Mon - Fri: 8am - 5:30pm • Saturday: 8am - 5pm
809 East Main • Sidney, MT | 406-433-3400

CRESTWOOD
Come Join the Good Life




Crestwood is a HUD subsidized housing complex for those 62 and older or disabled. We provide a welcoming environment that helps you feel at home in your spacious one-bedroom apartment. Close to town you are never far from your loved ones, shopping, or town events. Don't drive? Not a problem, Richland County Transportation comes right to the front door.



Please feel free to contact our Onsite Manager With any questions or concerns.
(406) 433-3721 or crestwd@midrivers.com
Our Supportive Service Coordinator is available to Crestwood residents and the public to help connecting to programs to keep you independent.
Call (406) 433-4681 for assistance.

410 3rd Ave. SW • Sidney, Montana 59270
Office: Mon - Thurs - 7 AM - 5 PM • Fri - 7 AM - 11 AM • TTY 711

Richland County 4-H Builds New Fair Booth

Richland County 4-H clubs have been holding fundraisers to earn money to build a new food booth at the Richland County Fairgrounds. The fundraising efforts include selling brand boards, memorial plaques and various other fundraising events conducted by the 4-H clubs in the area.

The brand board fundraiser consists of a square foot (12 inch by 12 inch) board on which area ranchers can place their personal brand. Each brand costs \$50 and will be displayed at the 4-H food booth. Boards may still be ordered but will not be ready for this year.

The memorial plaques are sheets of stainless steel metal with engraved names and faces of a former 4-H member or leader that someone wishes to honor. The cost of each plaque is \$300 and they will be displayed on a commemorative wall at the booth as well. This is an on going project which will be on display at the MSU Extension office year round and in the 4-H building during the fair.

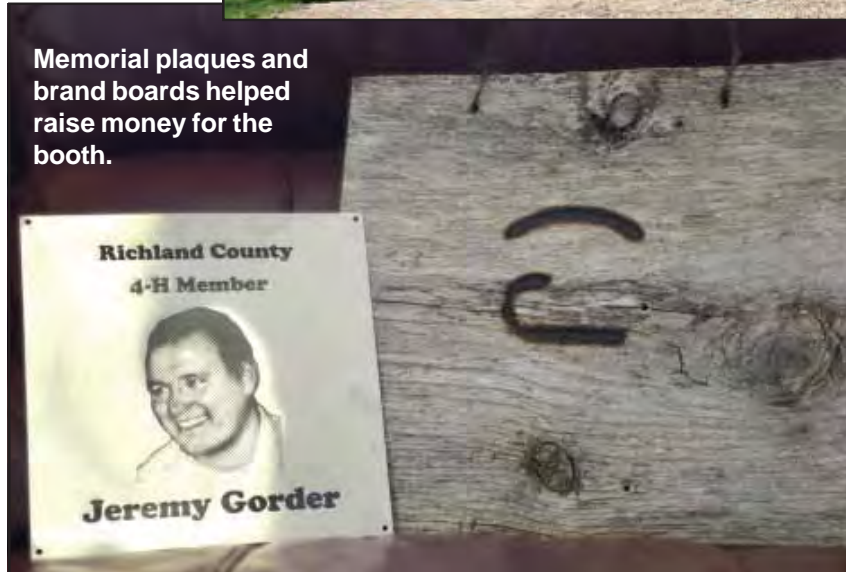
Many leaders and companies that support 4-H have donated money, materials and man power to the construction of the new booth. "It's been a real community effort and we appreciate all the help we are getting," stated 4-H leader Lisa Gorder.

The new 4-H fair booth will be updated with a new food prep area, ordering window and seating area. "The layout is designed to fit with the other food booths at the fair," stated Gorder. Construction of the new booth will be completed before this year's Richland County Fair.

For more information, or to take part in the fundraisers mentioned above, contact Lisa Gorder at 406-482-9672 or Josie Evenson at the MSU Extension office at 406-433-1206.



Memorial plaques and brand boards helped raise money for the booth.



The booth during construction.

Fantastic Fair Special

Save \$100 DCK 292L2
20 Volt Hammer
Drill/Recip Kit.

Reg: \$399 • Sale: \$299

Now through August 3rd



Mon-Fri: 7am - 5pm • Sat: 8am - 1pm
100 14th St. SE, Sidney • 406-433-2012

1-800-236-5787

Summer Clearance Sale On Now!



JZ Fashion Threadz
Women's and Men's Fashion

All Dressed Up & Ready For The Fair & Rodeo!

Save on all your favorite men's & women's fashions & footwear while there's still time to enjoy them!

Check Out Our New Lines
LRG • Fox • Brighton
• Liberty Black

113 E. Main Street • Sidney, MT • 406-433-5050



Bozo the Clown taunts people who try to dunk him at last year's fair.



West Blend Cookware holds a cooking demonstrations in the Richland County Fair Event Center.

WELCOME TO THE RICHLAND COUNTY FAIR & RODEO



We've Added 27 New Spacious Rooms

3 Suites • 14 King Suites
10 Double Queens
Total of 86 Rooms

Full Hot Breakfast Buffet

Expanded Workout Facility • Excellent Sundries Shop • Free High Speed Wireless Business Center • Elevator Access • Pet Friendly

Richland Inn & Suites

1200 S. Central Ave., Sidney, MT • 406-433-6400



Free High Speed Wireless • Hot Breakfast Buffet • Pool & Hot Tub • Fitness Room
Suites Available

Best Western Golden Prairie Inn & Suites

820 South Central Ave., Sidney, MT
406-433-4560



Free High Speed Wireless
Pet Friendly
Expanded Continental Breakfast
Lounge on Site

Lone Tree Inn

900 S. Central Ave., Sidney, MT
406-433-4520



Maverick Hunter takes aim with his carnival game prize.



Young fairgoers can't wait to get their faces painted.



Corbin Mullin goes for a hole in one.



A bullfighter (rodeo protection athlete) entertains the crowd during the 2012 Brookman Rodeo.



Livestock judge Rick Schmidt talks to 4-Hers showing their lambs.



Rita Wick performs the Red Barren reining pattern at the Horse Extravaganza.



Fairgoers enjoy the rides at last year's fair.





Local girls negotiate with a carnival game worker.

We Still Do Business the Old-Fashioned Way...

...We Look You in the Eye and Shake Your Hand.

We also pay attention to details & market your cattle to their very best ability. Your product is produced with integrity, let us market it that way.

P PREWITT & COMPANY, LLC

756 10th Ave SE • Sidney, MT 59270
406.482.5251 • www.prewittandco.com

Rod Prewitt 406.480.2777 Tim Larson 406.480.2666 Mike Yore 406.480.2888

SLMC

SIDNEY LIVESTOCK MARKET CENTER

720 10th Ave SE • Sidney, MT 59270
406-482-3513 • www.sidneylivestock.com

Christy Albin-Office 406-482-3513 Roger Nygaard 406-650-7410 Tim Larson 406-480-2666

WORKING HARD TO BUILD A COMPETITIVE MARKETPLACE FOR YOUR LIVESTOCK.

Co-Op Day Expresses Appreciation To Community

For many people, Thursday's Co-Op Day at the Fair entails a momentary stop at the sponsor tent for a complimentary root beer float—and an equally hasty return to other Fair-afternoon happenings. However, this day has more behind it than simply a free cooldown for fairgoers.

The event was set in motion in 2000 by Kelly Knaff of the Lower Yellowstone Rural Electric Association, one of the seven original co-ops which contributed to the day. Richland Farm Mutual joined in the fun in 2008 and Horizon Resources will participate this year. Other members include Richland Federal Credit Union, Farm Credit Services, Mid-Rivers Communications, Nortana Grain, and CHS Farmer's Elevator.

While these businesses offer different services, they all share a common connection to the community through their cooperative structure. The standard framework of a co-op includes open membership for all who use its services, democratic member participation through elected member representatives and corporate economic decisions, self-governing organization status, member/employee education, and community—not just co-op member—development emphasis.

Each of our local co-ops is highly involved in commu-

nity support through areas such as health programs, educational scholarships, and valuable neighborhood organizations. Therefore, Co-op Day may seem like just another public service these

businesses are willing to sponsor. There is a live radio broadcast from the sponsor tent, and information pamphlets concerning co-ops are available. In addition to being informative, this unique

annual assemblage of 8 co-operative associations was designed specifically to show appreciation to constituents of the community cooperatives.

Both the sponsorship

contribution to a large public gathering like the Fair and the provision of a fun treat for visitors are a part of showing their gratitude to the community. Pay an appreciative visit

to your local co-op representatives under the sponsor tent across from the Fair Office anytime on Thursday, and enjoy a root beer float beginning at 4 p.m.!



Welcome to the Richland County Fair & Rodeo

Stop by for a free root beer float during Co-op Day at the fair starting at 4 p.m. Thursday, August 1



Member owned cooperative serving Richland County since 1937

 **Lower Yellowstone REA**
3200 W Holly • Sidney • 406-488-1602 • www.lyrec.com
Your Touchstone Energy® Cooperative 

Co-op Day at the Fair

Don't miss Richland County's Fair and Free Floats Thursday by Richland County's Cooperatives!

Fixed Rate Secured Loans
Starting **1.75% APR**
At
On Approved Credit. No origination fees.



Serving our members for 73 years and counting.


Richland
FEDERAL CREDIT UNION
www.richlandfcu.com



201 West Holly St. • Sidney, MT (406) 482-2704
18 East 2nd St. • Culbertson, MT (406) 787-5890



Sidney Cenex Serves Customers for Over 40 Years

Cenex Harvest States has been serving the MonDak region for over forty years from its store in Sidney.

For the past fifteen years, they have been part of Farmer's Elevator, the co-op that now operates the store.

This winter, Cenex went through a huge remodel, increasing the size of every department, including the new clothing area which features both farm and ranch and oilfield clothing. The new front

counters provide space for greater customer service, while the expanded beverage area has more offerings in a convenient setting.

The store is offering more farm and ranch items than ever, including clothing and supplies. They fill propane, cut pipe, deliver bulk diesel, gas and propane to area customers and much more. Cenex also sells and services flatbed and stock trailers. Special orders are

always welcome, with the maximum time from order to delivery just five days.

The Sidney Cenex store employs thirty people, including several long time employees who have been with Cenex for over twenty years.

Cenex invites everyone to visit their booth in the commercial building at the Richland County Fair and register to win either a lady's or men's bike.

Visit Our Booth At The Fair...

...Or Stop By The Store

- 24 hr. Credit Card Pumps • FR Clothing
- C-Store • Cold Pop & Beer • Stock & Flatbed Trailers

Register To Win
Either a
Ladies' or
Men's Bike

Stop by the Co-op booth

Thursday, Aug. 1 starting at 4pm

Free Root Beer Float!



Major
Credit
Cards
Welcome



1281 S. Central, Sidney
406-433-1401

6 am to 9 pm M-S • 9 am -6 pm Sun.
www.farmerelevatorchs.com

Mid-Rivers COMMUNICATIONS

Proud Sponsor of Co-op Day!
Stop by our Booth at the Fair!

Check out our
NEW High Speed
Internet Plans!

Learn about
NEW Mid-Rivers
Cellular Services

www.midrivers.com • 433-6782
204 N Central Ave • Sidney

We hope to see you at Coop Days & 4-H Livestock Auction at the Richland County Fair & Rodeo

We're Celebrating!
100
OUR CENTENNIAL YEAR



Established May 1913

Richland Farm Mutual
INSURANCE COMPANY

Homeowners • Farmowners • Property Coverage
Personal & Farm Liability • ID Theft Recovery

LaDean Edam • Savage
Carol Fatzinger • Poplar
Becky Reidle • Sidney

West Side Professional Center, Suite 1 • 1405 4th St. SW, Sidney, MT
406-488-4898 • rfmmins@midrivers.com

Your Ability To Communicate Starts Here!



Keeping in Touch

ADVANCED COMMUNICATIONS

Come See Us at the Office and then Enjoy the Fair!

WE CAN KEEP YOUR COMMUNICATIONS CLEAR STARTING WITH:

- Great Line of Kenwood 2-Way Radios
- Long Range Communications To Cover Your Area
- SPOT For Your 911 Protection
- Pages To Keep In Touch



Call Larry Today at: 406-433-1659 • Toll Free: 1-800-433-1659 | Just North of McDonald's • Sidney, MT

Richland County Fair & Rodeo

"Spirit and Pride, County Wide!"

July 31 - August 3



PRCA RODEO
Thursday & Friday
7:30 pm (both nights)



Wednesday, July 31 (XTO Energy Day)

6:00 a.m. Agriculture Building open
 8:00 a.m. Judging: Agriculture, Horticulture & Floriculture exhibits
 8:30 a.m. Judging: 4-H Horse Class Showmanship
 11:00 a.m. Fair Office, Event Center
 ALL DAY The Market Place, Exhibits, Displays, etc.
 Antique Tractor Show
 Super Science/The Original Fun With Physics- Time TBD
 LemurLand of Madagascar & CampJunction Exotic Zoo- Time TBD
 12:00 - 6:00 p.m. All 4-H Livestock exhibits entered
 1:00 p.m. Flag Raising Ceremony in the Oval
 4:00 p.m. North Star Amusements open
 4:00 p.m. Judging: 4-H Poultry
 6:00 p.m. Judging: 4-H Dogs, Cats, Rabbits
 7:00 - 8:00 p.m. Weighing: 4-H Hogs, Sheep, & Goats
 7:30 p.m. Horse Extravaganza in Grandstand Arena
 10:00 p.m. Agriculture Building & Event Center closes
 11:00 p.m. Fair Office closes

Thursday, Aug. 1 (Co-op Day)

6:30 a.m. Weighing: 4-H Market Beef
 8:30 a.m. Judging: 4-H Livestock (Swine, Sheep, Dairy, Goat)
 11:00 a.m. Fair Office, Event Center & Ag Building opens
 ALL DAY North Star Amusements Carnival at 1 pm
 The Market Place, Exhibits, Displays, etc.
 Antique Tractor Show
 Super Science/The Original Fun With Physics- Time TBD
 LemurLand of Madagascar & CampJunction Exotic Zoo- Time TBD
 Caricatures by Connie- Time TBD
 Open Range Band- Time TBD
 4:00 p.m. FREE Root Beer Floats until gone in Sponsorship Tent
 5:00 p.m. Judging: 4-H Market Beef
 7:30 p.m. PRCA Rodeo presented by Brookman Rodeo, LLC
 ** Military Appreciation Night
 10:00 p.m. Event Center and Ag Building close
 11:00 p.m. Fair Office closes

Amundrud's RV, Inc.

Sales & Service Center

406-433-2226 • 1-800-399-2226 • www.amunrudsvinc.com • Hwy 16 S., Sidney, MT

Come & See Us At The Fair!



Check Out The All New 2014 Cyclone Cruiser!

Enjoy The Richland County Fair & Rodeo!



Come & See Us For All Your Agricultural, Commercial or Personal Banking Needs!

Brent Torgerson, President



Merchants Bank
 Big enough to serve you | Small enough to know you
 216 S. Ellery Ave., Fairview | 406-742-5203 | Mon - Fri: 9am - 4pm

Enjoy the Richland County Fair & Rodeo!

- Fresh Meat, Produce & Bakery
- Ice Cold Beverages
- Western Union • Lottery
- Full Service Deli/Coffee Shop
- Floral Shop • Movies
- Special Orders Always Welcome (Call 482-3737)



REESE & RAY'S IGA
 Open 6am - 10pm Daily | 203 2nd St. NW • Sidney, MT • 406-482-3737 | Floral Dept: 482-8235

In Concert Sat., Aug. 3 7:30 p.m.

Montgomery Gentry



With Special Guest
 Gloriana



Friday, Aug. 2 (Thrivent Financial Day)

- 8:00 a.m..... 4-H Showmanship (Jr./Sr.)
- 11:00 a.m..... Fair Office, Ag. Building & Event Center opens
-Overall 4-H Grand Champ. Showmanship Contest (Jr./Sr.)
- ALL DAY..... North Star Amusements Carnival at 1 pm
- The Market Place, Exhibits, Displays, etc.
- Antique Tractor Show
- Super Science/ The Original Fun With Physics- Time TBD
- LemurLand of Madagascar & CampJunction Exotic Zoo- Time TBD
- Caricatures by Connie- Time TBD
- Open Range Band- Time TBD
- 3:00 p.m..... Free Mini Cheesecakes
- 4:30 p.m..... Trophy & Awards Presentation (4-H Arena)
- 5:00 p.m..... 4-H Livestock Sale (4-H Arena)
- 7:30 p.m..... PRCA Rodeo presented by Brookman Rodeo, LLC
- Tough Enough to Wear Pink Night
- 10:00 p.m..... Ag. Building & Event Center closes
- 11:00 p.m. Fair Office closes

Saturday, Aug. 3 (Williston State College Day)

- 11:00 a.m..... Fair Office, Ag. Building & Event Center opens
- ALL DAY..... North Star Amusement Carnivals at 12 pm (Noon)
- The Market Place, Exhibits, Displays, etc.
- Antique Tractor Show
- Super Science/The Original Fun With Physics- Time TBD
- LemurLand of Madagascar & CampJunction Exotic Zoo- Time TBD
- Caricatures by Connie- Time TBD
- Open Range Band- Time TBD
- 7:30 p.m.... **Montgomery Gentry with special guest Gloriana**
- 9:30 p.m..... Event Center & Ag. Building closes
- 12:00 a.m..... FAIR OFFICE CLOSES

HAVE A BALL
at the Fair

THE CUTTER EVERYONE TRIES TO IMITATE.

No matter how hard they try, no one can match the Batwing™ rotary cutter. And with these features, the 3180 Series 3 puts even more distance between Woods cutters and the rest of the pack:



- Clean deck to shed water and material, helping prevent corrosion and rust
- Either two- or three-section flexible wing rotary cutter
- Patented Intra-Drive® gearbox
- Cuts through brush up to 4-inch diameter
- Extra capacity 13-inch side frame depth
- For use on tractors 50 to 200 horsepower with either 540 or 1000 rpm PTOs
- Exclusive quick change blade system with durable 1/2-inch thick alloy steel blades
- Blade speeds exceed 16,000 feet per minute delivering a near finish cut quality

All this and more from the original Woods Batwing. Stop in today to take a closer look at the cutter everyone else is imitating!

WOODS
 Tested. Proven. Unbeatable.
 www.woodsline.com

Batwing and Intra-Drive are registered trademarks of Woods Equipment Company.

SUNRISE EQUIPMENT

Hwy. 16 NW, Sidney • 406-488-3112

After Hours Parts 406-489-3112 • 1-800-967-3597

Stop By & Visit Us At The Richland County Fair!

See the latest Equipment From..

- John Deere • Brandt • Woods
- Leon • Summers
- Bourgault and More

Factory Reps on Hand!

SUNRISE EQUIPMENT

Hwy. 16 NW, Sidney • 406-488-3112

After Hours Parts 406-489-3112 • 1-800-967-3597

Don't stop now.



Trust Brandt - for industry-leading augers that just won't stop.

Brandt
 DELIVERING VALUE

SUNRISE EQUIPMENT

Hwy. 16 NW, Sidney • 406-488-3112

After Hours Parts 406-489-3112 • 1-800-967-3597

Keep your harvest moving with a Brandt premium quality auger. It's easy with a capacity of over 5,100 bu/hr for the 10" auger and 9,500 bu/hr for the 13" auger.* Look for even more capacity with our improved hopper design. Brandt augers also offer a heavier scissor lift to better manage high grain volumes, a wider stance for more stability, and a heavier gear-box for easy access.



**Welcome to the
Richland County
Fair and Rodeo!**

Windshield
Replacement & Repair

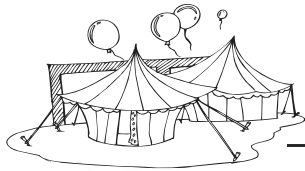
**710
Auto Glass**

710 West Holly, Sidney
482-1544
since 1979

Most jobs
can be
completed
in 2 hours
or less.



Clay Carpenter smiles as he receives his grand champion honors in the hog livestock judging.



**Enjoy The Sights &
Sounds Of The Fair!**



406-433-6754 • Fax: 406-433-6755 • les@slservices.net • 2265 S. Central Ave. Sidney, MT 59270

Enjoy the Showcase of the MonDak July 31 - August 3

“SPIRIT & PRIDE COUNTY WIDE!”

**Richland County
Centennial
June 13-15, 2014**



**RICHLAND COUNTY COMMISSIONERS
Loren Young, Shane Gorder & Duane Mitchell**



Young fans enjoy the Horse Extravaganza.



Kids have a blast racing each other at Action Entertainment's Nascar RC Racing booth.

Welcome to the

See us
for all
your
Farm, Car
& Truck
Tires

County
Fair



On-The-Farm Service

GOODYEAR



349 22nd Ave NW, Sidney
406-488-6636 1-800-967-3795



Enjoy The Richland County Fair!

POWDER KEG

We Will Be Closed
July 29 - August 5
So our employees can enjoy the fair

Fairview, MT | 406-742-5180



SUMMER CLEARANCE EVENT

RAM DODGE CHRYSLER Jeep

2013 Dodge Grand Caravan Crew SXT

MSRP\$31,075
Discount\$1,485
Rebate\$2,000

3.6 - V6, 4 door, dual heat/AC, power seats, remote start, heated front seats, navigation & more! Cashmere Pearl Coat. #4295-A



\$27,590

2013 Ram 1500 Quad Cab Express

MSRP\$35,345
Discount\$1,993
Rebate\$3,500

4wd, 5.7-V8, 4 door, 4x4, automatic, AC, tilt, cruise, powerlevers, power windows. Deep Cherry Red. #4302-A



\$29,852

2013 Jeep Compass Latitude

MSRP\$25,260
Discount\$805
Rebate\$2,500

4wd, 4 door, 2.4-4 cy, automatic, AC, tilt, cruise, power windows, power locks, heated front seats. Deep Cherry Red. #4350-A



\$21,955

Sale price does not include doc fee. Must qualify for all rebates.

ACTION AUTO



GARY MCPHERSON
Hm: 488-7759



GARY SCHOEPP
Cell: 489-2312



JON NELSON
Cell: 206-669-5285

433-2312 • 1-800-788-2312 | 220 East Main, Sidney, MT

4-H Busy Getting Ready For Fair

Submitted by Josie Evenson

4-H Livestock Sale to Start at 5:00 p.m. on Friday August 2nd

The 4-H program in Richland County has been growing, in fact in 2013, Richland County 4-H added a new club; the Homesteaders, who will also be taking part in this year's fair festivities. With all the growth in the 4-H program, the livestock barns at the fair will be full of exciting exhibits for people of all ages. The exhibits will include beef, dairy, hogs, sheep, horses, rabbits, goats

and poultry. Fair is the time for 4-H members to demonstrate the knowledge that they have gained over the past 4-H year with their animal projects. In addition to the livestock shows, the market livestock program will be holding their annual sale on Friday, August 2nd at 5:00 p.m. at the 4-H arena. The sale will be following the 4-H award ceremony starting at 4:00 p.m. and the Cloverbud Orphan Animal Parade. The award ceremony is a time of celebration for 4-H members, parents, leaders and supporters. The Orphan Animal

Parade is an event for our Cloverbud members who are 6 to 8 years old to participate in the Fair with animals of their choice. All are welcome to attend these fun and entertaining events to support the Richland County 4-H members and program.

4-H Exhibit Building

With the Richland County Fair rapidly approaching, 4-H members are busy putting final touches on all their 4-H project exhibits. In the 4-H program, youth have the opportunity to partake in projects that enhance education in important life

skills as well as provide members with lifelong interests and hobbies. As 4-H in the nation continues to grow and change, 4-H projects are becoming more diverse. The projects that youth can now enroll include projects from sewing to sport fishing, cooking to skate boarding, and

woodworking to robotics. Fair is a time for all 4-H members to display and showcase what they have learned and completed this year in their 4-H projects. This year the 4-H Exhibit Building will have a vast display of exhibits completed by Richland County 4-H members. The

exhibits will be on display from Wednesday, July 31 at noon to the conclusion of the Fair on Saturday, August 3rd. We would like to invite everyone to stop by and take some time to enjoy the exhibits that Richland County youth have completed this past year.



Community pride is a way of life for some of us... Fair time reminds of us of our community. At The Lodge, residents live independently, like they always have, yet have opportunities to stay involved in the community.

Senior Living at its Best • Come Home to The Lodge!

1015 7th Ave SW • Sidney, Montana
Phone: 406-488-4682 • www.lodgeatlonetree.org



Kelvin Hill's John Deere tractor was on exhibit in the 4-H building last year.

Enjoy the Richland Co. Fair

We Are Your Oil-field Supply Headquarters

- Balon Ball Valves
- Gates Hydraulic Hoses & Belts
- Down Hole Sucker Rod Pumps
- Tubing Anchors
- Line pipe
- Tubing
- Fittings



24 HOUR SERVICE

1511 South Central Ave., Sidney, MT
(406) 488-8706
Fax: 406-488-8708
email: rpands@midrivers.com

8221 62nd St. NW (Old Hwy 2)
Stanley, N.D.
(701) 628-8706

Welcome to the Richland County Fair!



Ya-Hoo!

Food, Fun & Cash

**7 Big Screen TVs • Satelite Music
Free Food Mon., Wed. & Fri Nights**

\$10⁹⁵ Noon Buffet Mon.-Sat.

6 Progressive Daily Cash Drawings

Kitchen's Open Late

**See Us for your favorite beverage
in Air Conditioned Comfort!**



419 S. Ellery • Fairview, MT • 406-742-5164

2013 Horse Extravaganza

The Sheridan Silverados Equestrian Drill Team performed at the 2012 Horse Extravaganza.



Taylor Fink performs a reining pattern.

Submitted by Waynette Molloy

Welcome to this year's program! Wendy Haugen has stepped up to take over the Extravaganza, with lots of changes and some great acts for your enjoyment.

The flag presentation will be made by our own Ms. Southeastern Montana Rodeo Queen Jade Brunsvold. Jade has been involved in our program since it started and we are very proud to have her present the colors.

This year, Wendy has contacted several people to provide rides in the arena. At press time we have three people who will hopefully be here, the stagecoach from Culbertson, a restored buggy from Milt Madison and a covered wagon from Richard Albin. Hopefully they will all be able to attend.

The Big Sky Shires from the Glendive area will be here and they are always a beautiful site to behold. The Curlys will finally be making an appearance with us as well as the Dynneson team trained by Grandpa and Granddaughter. The Silverado drill team will be making another stellar appearance as well as the BayWatch team of Somer Reidle and Jade Brunsvold plus perhaps one more teammate. They always perform a great mini-drill team performance. Peggy Ann Stroup and her Spotted Troupe will perform again and they are beautiful to watch.

There will be a new sport unveiled at the show this year. Horseback target shooting will be demonstrated with Bobbi Blankenship Morgans from Glendive. Bobbi's daughter and son in law will also ride and share their skills. This is something new to our area and should be very exciting to watch.

As you see, Wendy has worked hard to bring you a great show. Please plan to attend on Wednesday night, at 7 p.m. We are at the Sidney Fairgrounds arena and the best part is, IT'S FREE! See you there!

Mitchell's Is A Great Place To Work!

build it, fix it, lift it, haul it...



Take A Ride!
At The Richland County
Fair & Rodeo!



Proud Sponsor of



Check us out online at
www.mitchellsoilfield.com

ONE NATION UNDER GOD

WE SET THE STANDARD FOR EFFICIENT POWER WHILE OTHERS WERE STILL DECIDING WHAT THE STANDARD WAS.

While some manufacturers are just moving to SCR (Selective Catalytic Reduction) technology to meet fuel and emissions needs, Case IH has been supporting it since the beginning. And with over 10,000 tractors in the field, our SCR track record is proven. In fact, in recent independent tests, the Steiger® 600 set a record for drawbar horsepower and fuel efficiency, outperforming the Deere 9630 across the entire powerband. To learn more about how you can be ready with the proven leader, visit caseih.com/efficientpower.

FUEL EFFICIENCY	
Case IH Steiger 600	8.2% Case IH Advantage
Case IH Steiger 600	10.5% Case IH Advantage

BE READY.

SEE US TODAY TO LEARN MORE ABOUT THE STEIGER 600!

TRI-COUNTY IMPLEMENT, INC.
 2429 W HOLLY STREET
 SIDNEY, MT 592709213
 406-488-4400

CASE IH
 HORTICULTURE



Jeff Martin, the blond, curly-haired magician, performs for fairgoers at the 2012 Richland County Fair.



Many historic tractors are on display at the Antique Tractor Show.

Stop In & Visit About Your Irrigation Plans While In Sidney For The Richland County Fair & Rodeo!



One of the most critical factors for irrigators is ensuring their center pivots and linears are ready to run this season with no down time. Valley dealers are experts in helping you preserve the quality of your irrigation equipment, no matter the brand. Along with our parts, sales and service departments, we'll keep your equipment moving and doing its job this growing season.

So call today. Together, we'll determine your path for a worry-free season.

Your Full Turnkey Valley® Dealer also offering these services:

- Valley® Pivot Sales, Installation Service & Parts
- Floating Irrigation Pumps, Installations & Repair
- Water Well Drilling & Well Service • Plumbing • Parts Department
- Pipelines • Directional Drilling • Utility (boring, trenching, etc)
- Irrigation Systems Insurance

One contractor to do it all. No subs needed.

SAX COMMUNICATIONS **Sax Electric**

Kalberer's Heating & Cooling
 A division of Agri Industries

